



共创成功与未来
To create success and the future

当责 诚信 创新
Accountability
Integrity
Innovation

企业简介



瑞智始創於1989年，始創之際即以「技術獨立自主、創建一流品牌、打造科技人生」做為公司創業的初衷與理想，全體員工均秉持著「以優異的品質，邁向市場競爭；以卓越的技术，永遠領先業界；以完善的服務，贏得客戶滿意」的經營理念，積極地發展公司的核心技术，致力成為全球頂尖之壓縮機供應商。

發展至今，瑞智擁有台灣桃園、廣東虎門、廣東惠州、山東青島等生產基地。目前壓縮機年產量能達1100萬台，馬達年產能達1300萬套。壓縮機產品包含39、44、48、50及55共五大系列，並有單雙轉子直流變頻，綠色環保冷媒等多個機型。廣泛應用於空調、除濕機、熱泵干衣機、熱泵熱水器等领域，產品銷往全球各地。

Established in 1989, Rechi aims to be the world's leading supplier of compressors with its state-of-the-art technology. All the employees of Rechi believe in improving products and service in order to build long term relationship with clients. Customer satisfaction is of utmost importance to the company and Rechi accomplishes this by consistently looking at the market trends and improving on its technology.

Today, Rechi owns numerous production factories and there are Taiwan, Taoyuan; Guangdong, Humen; Huizhou; and Qingdao Plant. Rechi is capable of producing up to 11 million units of compressors and 13 million sets of motors annually. Compressor products include 39, 44, 48, 50 and 55 frame series and some of these series possesses both single and twin cylinder, DC inverters, environmentally friendly refrigerant and many other models. These products are sold worldwide and are widely used in air conditioners, dehumidifiers, heat-pump dryers, heat-pump water heaters and other products.

经营理念

以優異的品質，邁向市場競爭
以卓越的技术，永遠領先業界
以完善的服務，贏得客戶滿意

Philosophy

Quality to market competition
Technology to lead the trade
Service to customer satisfaction



工厂分布/Factory Location

惠州/Huizhou



Area: 160,000m²

青岛/Qingdao



Area: 191,452m²

东莞/Dongguan



Area: 34,193.5m²

台湾/Taiwan



Area: 29,652m²



销售网络/Sales Network





身为一个全球主要空调用压缩机之供货商，我们了解也深知我们的产品、服务及活动可能影响到整个生活的环境，我们有责任为全球环境保护尽一份心力，因此，我们将恪守我们的环境政策。

As a major global air-conditioning compressor supplier, we know our products and services and activities may affect the whole life of the environment, we have the responsibility to the global environmental protection, therefore, we will abide by our environmental policy.



目录 CONTENTS

| | |
|--|----|
| 压缩机/Compressor | 07 |
| 压缩机编码原则 Compressor Code Identification | 07 |
| 压缩机能力分布图 Compressor Cooling Capacity Range | 08 |
| 压缩机产品规格索引 Product Spec Index | 10 |
| 变频压缩机 DC Inverter Compressor | 11 |
| 定速压缩机 Constant-Speed Compressor | 13 |
| 工作/测试工况 Working / Testing Condition | 26 |
| 接线图 Wiring Diagram | 26 |
| 外观图 Outline Drawing | 27 |
| 外观图尺寸 Dimensions Table for Outline Drawing | 29 |
| 马达/Motor | 31 |
| 变频控制器/ Inverter Controller | 33 |



压缩机编码原则/Compressor Code Identification

| 机体系列/Frame Series | | | | 电源/Power Source | | | 适用系统/For System | |
|-------------------|-----------------|--------------------------|------|---|----------|---------|--|--|
| 代码 Code | 机壳外径 Comp. O.D. | 汽缸数目大小 No., Size of Cyl. | Code | 电压 Voltage | 频率 Hz | 代码 Code | 组合 Combination | |
| 39 | Φ106 | 1 | 1 | 115 | 60 | A-F | 一般冷媒量+外置式保护器, 马达组合 General Refrigerant + Ext. OLP, Motor Set. | |
| 43 | | 1 | 2 | 208-230 | 60 | G-M | 一般冷媒量+内置式保护器, 马达组合 General Refrigerant + Int. OLP, Motor Set. | |
| 44 | Φ117 | 1 | 3 | 220-240 | 50 | N-T | 多冷媒量+外置式保护器, 马达组合 More Refrigerant + Ext. OLP, Motor Set. | |
| 45 | | 2 | 4 | 200-220 低电压 Low Voltage | 50 | U-Z | 多冷媒量+内置式保护器, 马达组合 More Refrigerant + Int. OLP, Motor Set. | |
| 48 | Φ127 | 1 | 5 | 100/100-110 | 50/60 | | | |
| 50 | Φ131 | 1 | 6 | 115-127 | 60 | | | |
| 55 | Φ147 | 1 | 7 | 265 | 60 | | | |
| | | | 8 | 200/200-220 | 50/60 | | | |
| | | | A-F | DC集中绕+铁氧磁石 DC Concentrated Winding + Ferrite Magnet | Inverter | | 储液瓶 Accumulator | |
| | | | G-M | DC集中绕+稀土磁石 DC Concentrated Winding + Rare-Earth Magnet | Inverter | | 泵型式 Pump Type | |
| | | | U-Z | DC分布绕+稀土磁石 DC Distributed Winding + Rare-Earth Magnet | Inverter | | 顶盖 Top Cap | |
| | | | | | | | 机油种类 Oil Type | |
| | | | | | | | 机油量 Oil Volume | |
| | | | | | | | 底座角度 Base Plate Angle | |

冷房能力 Cooling Capacity
Number *100 Kcal/hr @ASHRAE/T

例 Ex. **39** **A** **12** **1** **A** **A** **&** **1** **4** **K** **A**

| 冷媒与工作工况/Refrigerant and working condition | | | |
|---|----------------|------------------------|---|
| 代码 Code | 冷媒 Refrigerant | 工作工况 Working Condition | 典型应用 Typical Application |
| A | R410A | ASHRAE/T | 一般空调机 / 除湿机 General Air-Conditioner / Dehumidifier |
| B | | MAT | 北美/中国高效空调机 US/China Hi-EER Air-Conditioner |
| N | | CHEER | 北美单元式(有风管的分离式)空调机 US Unitary (Ducted Split) Air-Conditioner |
| C | R407C | ASHRAE/T | 一般空调机/部份用于热泵干衣机 General Air-Conditioner / Some for Heat-Pump Dryer |
| E | R134a | ASHRAE/T | 一般空调机 / 除湿机 General Air-Conditioner / Dehumidifier |
| F | | HPD | 热泵干衣机 Heat-Pump Dryer |
| G | | HPWH | 热泵热水器 Heat-Pump Water-Heater |
| R | R22 | ASHRAE/T | 一般空调机 / 除湿机 General Air-Conditioner / Dehumidifier |
| S | | MAT | 中国高效空调机 China Hi-EER Air-Conditioner |
| T | | ASHRAE/T + T3 | 热带(T3)空调机 Tropical(T3) Air-Conditioner |

压缩机能力分布图/Compressor Cooling Capacity Range

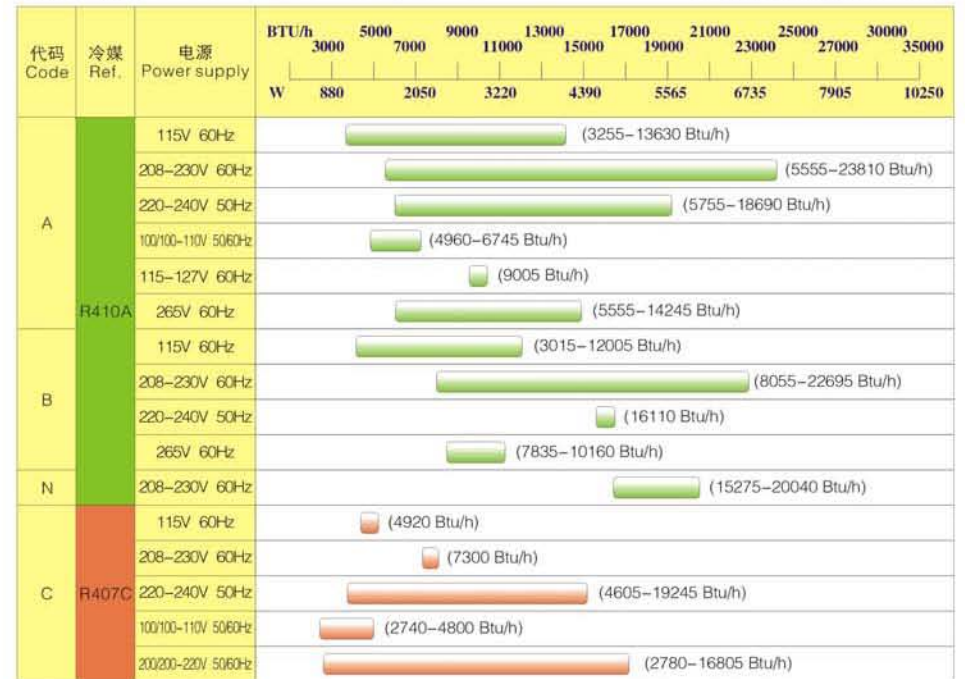
直流变频压缩机 /DC Inverter Compressor

Testing Condition: ASHRAE/T



定速压缩机 /Constant-Speed Compressor

Testing Condition: ASHRAE/T





压缩机能力分布图/Compressor Cooling Capacity Range

定速压缩机 /Constant-Speed Compressor

Testing Condition: ASHRAE/T



全球认证布局 /Certification Map



压缩机产品规格索引/Product Spec Index

| 机型 Type | 代码 Code | 冷媒 Ref. | 典型应用 Typical Application | 页数 Page |
|------------------------------------|---------|---------|---|---------|
| 变频压缩机 DC Inverter Compressor | A | R410A | 一般空调机 / 除湿机 General Air-Conditioner / Dehumidifier | Page 11 |
| | C | R407C | 一般空调机/部份用于热泵干衣机 General Air-Conditioner / Some for Heat-Pump Dryer | Page 12 |
| | F | R134a | 热泵干衣机 Heat-Pump Dryer | Page 12 |
| 定速压缩机 Constant-Speed Compressor | A | R410A | 一般空调机 / 除湿机 General Air-Conditioner / Dehumidifier | Page 13 |
| | B | | 北美/中国高效空调机 US/China Hi-EER Air-Conditioner | Page 15 |
| | N | | 北美单元式(有风管的分离式)空调机 US Unitary (Ducted Split) Air-Conditioner | Page 16 |
| | C | R407C | 一般空调机/部份用于热泵干衣机 General Air-Conditioner / Some for Heat-Pump Dryer | Page 17 |
| | E | R134a | 一般空调机 / 除湿机 General Air-Conditioner / Dehumidifier | Page 18 |
| | F | | 热泵干衣机 Heat-Pump Dryer | Page 19 |
| | G | | 热泵热水器 Heat-Pump Water-Heater | Page 19 |
| | R | R22 | 一般空调机 / 除湿机 General Air-Conditioner / Dehumidifier | Page 20 |
| | S | | 中国高效空调机 China Hi-EER Air-Conditioner | Page 24 |
| | T | | 热带(T3)空调机 Tropical(T3) Air-Conditioner | Page 25 |

变频压缩机/DC Inverter Compressor



变频压缩机/DC Inverter Compressor



A 典型应用: 一般空调机 / 除湿机
Typical Application: General Air-Conditioner / Dehumidifier

R410A 单缸直流变频 DC Inverter Single Cylinder

Testing Condition : ASHRAE/T

| Model | Disp. c.c. | Capacitor μF VAC | Cooling Capacity | | Input Power W | EER Btu/h.W | COP W/W | Outline Drawing | Safety Recognition | | | | | | |
|-------------|---------------|---------------------|------------------|------|---------------------|----------------|------------|--------------------|--------------------|-----|-----|-----|-----|--------|--|
| | | | Btu/h | W | | | | | C-UL | VPC | TUV | CCC | VDE | Others | |
| 39A18VB (Δ) | 7.25 | * * | 7380 | 2160 | 715 | 10.32 | 3.02 | 39-10 | | | | | | | |
| 39A18XP (Δ) | 7.25 | * * | 7380 | 2160 | 720 | 10.25 | 3.00 | 39-10 | | | | | | | |
| 39A18YA (Δ) | 7.25 | * * | 7380 | 2160 | 740 | 9.97 | 2.92 | 39-10 | | | | | | | |
| 39A18YP (Δ) | 7.25 | * * | 7460 | 2185 | 715 | 10.43 | 3.06 | 39-10 | | ○ | | ○ | | | |
| 39A23VP (Δ) | 9.0 | * * | 9365 | 2740 | 910 | 10.29 | 3.01 | 39-10 | | ○ | ○ | ○ | | | |
| 39A23VS (Δ) | 9.0 | * * | 9305 | 2725 | 905 | 10.28 | 3.01 | 39-10 | | ○ | | ○ | | | |
| 39A23WP (Δ) | 9.0 | * * | 9365 | 2740 | 915 | 10.23 | 2.99 | 39-10 | | | | | | | |
| 39A23XP (Δ) | 9.0 | * * | 9365 | 2740 | 905 | 10.35 | 3.03 | 39-10 | | | | ○ | | | |
| 39A23YA (Δ) | 9.0 | * * | 9365 | 2740 | 935 | 10.02 | 2.93 | 39-06 | | | | | | | |
| 39A23YP (Δ) | 9.0 | * * | 9365 | 2740 | 900 | 10.41 | 3.04 | 39-10 | | | | ○ | | | |
| 39A26VP (Δ) | 10.4 | * * | 10870 | 3185 | 1045 | 10.40 | 3.05 | 39-10 | | | | | | | |
| 39A26XP (Δ) | 10.4 | * * | 10870 | 3185 | 1050 | 10.35 | 3.03 | 39-10 | | ○ | | ○ | | | |
| 39A26XP (Δ) | 11.4 | * * | 11905 | 3485 | 1160 | 10.26 | 3.00 | 39-10 | | | | | | | |
| 43A23VB (Δ) | 9.0 | * * | 9365 | 2740 | 905 | 10.35 | 3.03 | 44-02 | | | | | ○ | | |
| 43A23YB (Δ) | 9.0 | * * | 9365 | 2740 | 890 | 10.52 | 3.08 | 44-02 | | ○ | | ○ | | | |
| 43A26XN (Δ) | 10.4 | * * | 10870 | 3185 | 1050 | 10.35 | 3.03 | 44-02 | | | | | | | |
| 44A23WB (Δ) | 9.2 | * * | 9445 | 2765 | 940 | 10.05 | 2.94 | 44-02 | | | | | | | |
| 44A28WB (Δ) | 11.4 | * * | 11705 | 3430 | 1170 | 10.00 | 2.93 | 44-02 | | | ○ | | | | |
| 44A28WP (Δ) | 11.4 | * * | 11945 | 3500 | 1185 | 10.08 | 2.95 | 44-02 | | | | | | | |
| 44A33WN (Δ) | 13.2 | * * | 13770 | 4030 | 1390 | 9.91 | 2.90 | 44-06 | | | | | | | |
| 44A33XN (Δ) | 13.2 | * * | 14165 | 4150 | 1385 | 10.23 | 3.00 | 44-06 | | ○ | ○ | | | | |
| 44A37WN (Δ) | 14.7 | * * | 15475 | 4530 | 1530 | 10.11 | 2.96 | 44-06 | | ○ | | | | | |
| 43A23DE (▲) | 9.0 | * * | 9305 | 2725 | 910 | 10.23 | 2.99 | 44-07 | | | | ○ | | | |
| 43A23DP (▲) | 9.0 | * * | 9305 | 2725 | 910 | 10.23 | 2.99 | 44-09 | | | | ○ | | | |
| 43A23DS (▲) | 9.0 | * * | 9305 | 2725 | 910 | 10.23 | 2.99 | 44-10 | | ○ | | | | | |
| 43A23EE (▲) | 9.0 | * * | 9305 | 2725 | 905 | 10.28 | 3.01 | 44-07 | | | | | | | |
| 43A26CE (▲) | 10.4 | * * | 10870 | 3185 | 1070 | 10.16 | 2.98 | 44-02 | | | | | | | |
| 43A26CS (▲) | 10.4 | * * | 10870 | 3185 | 1070 | 10.16 | 2.98 | 44-06 | | | | | | | |

(Δ) 机型为稀土磁石 Rare Earth Magnet
(▲) 机型为铁氧磁石 Ferrite Magnet

R410A 双缸直流变频 DC Inverter Twin Cylinder

Testing Condition : ASHRAE/T

| Model | Disp. c.c. | Capacitor μF VAC | Cooling Capacity | | Input Power W | EER Btu/h.W | COP W/W | Outline Drawing | Safety Recognition | | | | | | |
|-------------|---------------|---------------------|------------------|------|---------------------|----------------|------------|--------------------|--------------------|-----|-----|-----|-----|--------|--|
| | | | Btu/h | W | | | | | C-UL | VPC | TUV | CCC | VDE | Others | |
| 45A33LN (Δ) | 13.2 | * * | 13690 | 4010 | 1300 | 10.53 | 3.08 | 44-02 | | | | | | | |

(Δ) 机型为稀土磁石 Rare Earth Magnet

C 典型应用: 一般空调机/部份用于热泵干衣机
Typical Application: General Air-Conditioner / Some for Heat-Pump Dryer

R407C 单缸直流变频 DC Inverter Single Cylinder

Testing Condition : ASHRAE/T
HPD

| Model | Disp. c.c. | Capacitor μF VAC | Cooling Capacity | | Input Power W | EER Btu/h.W | COP W/W | Outline Drawing | Safety Recognition | | | | | | |
|-------------|---------------|---------------------|------------------|------|---------------------|----------------|------------|--------------------|--------------------|-----|-----|-----|-----|--------|--|
| | | | Btu/h | W | | | | | C-UL | VPC | TUV | CCC | VDE | Others | |
| 39C14WA (Δ) | 8.1 | * * | 6050 | 1770 | 565 | 10.71 | 3.13 | 39-26 | | | | | | | |
| | | | 8810 | 2580 | 815 | 10.81 | 3.17 | | | | | | | | |

(Δ) 机型为稀土磁石 Rare Earth Magnet

F 典型应用: 一般空调机 / 除湿机
Typical Application: General Air-Conditioner / Dehumidifier

R134a 单缸直流变频 DC Inverter Single Cylinder

Testing Condition : ASHRAE/T
HPD

| Model | Disp. c.c. | Capacitor μF VAC | Cooling Capacity | | Input Power W | EER Btu/h.W | COP W/W | Outline Drawing | Safety Recognition | | | | | | |
|-------------|---------------|---------------------|------------------|------|---------------------|----------------|------------|--------------------|--------------------|-----|-----|-----|-----|--------|--|
| | | | Btu/h | W | | | | | C-UL | VPC | TUV | CCC | VDE | Others | |
| 39FQJWA (Δ) | 7.25 | * * | 3570 | 1045 | 320 | 11.16 | 3.27 | 39-26 | | | | | | | |
| | | | 5395 | 1580 | 445 | 12.12 | 3.55 | | | | | | | | |
| 39F1AWA (Δ) | 9.0 | * * | 4365 | 1280 | 400 | 10.91 | 3.20 | 39-26 | | | | | | | |
| | | | 6805 | 1995 | 570 | 11.94 | 3.50 | | | | | | | | |
| 39F1AXA (Δ) | 9.0 | * * | 4365 | 1280 | 395 | 11.05 | 3.24 | 39-26 | | | | | | | |
| | | | 6805 | 1995 | 565 | 12.04 | 3.53 | | | | | | | | |
| 39F1AYA (Δ) | 9.0 | * * | 4365 | 1280 | 390 | 11.19 | 3.28 | 39-26 | | | | | | | |
| | | | 6805 | 1995 | 560 | 12.15 | 3.56 | | | | | | | | |
| 39F13WA (Δ) | 11.4 | * * | 5555 | 1625 | 505 | 11.00 | 3.22 | 39-03 | | | | | | | |
| | | | 8650 | 2535 | 730 | 11.85 | 3.47 | | | | | | | | |

(Δ) 机型为稀土磁石 Rare Earth Magnet



定速压缩机/Constant-Speed Compressor

定速压缩机/Constant-Speed Compressor



A 典型应用: 一般空调机 / 除湿机
Typical Application: General Air-Conditioner / Dehumidifier

R410A 1Φ 115V / 60Hz

Testing Condition : ASHRAE/T

| Model | Disp. c.c. | Capacitor | | Cooling Capacity | | Input Power W | EER Btu/h.W | COP W/W | Outline Drawing | Safety Recognition | | | | | | |
|---------|---------------|-----------|-----|------------------|------|------------------|----------------|------------|-----------------|--------------------|-----|-----|-----|-----|--------|---------|
| | | μF | VAC | Btu/h | W | | | | | C-UL | VPC | TUV | CCC | VDE | Others | |
| 39A081F | 3.5 | 15 | 270 | 3255 | 955 | 405 | 8.04 | 2.36 | 39-07 | ○ | | | | | | |
| 39A1A1F | 4.5 | 15 | 270 | 4225 | 1240 | 520 | 8.13 | 2.38 | 39-07 | ○ | | | | | | |
| 39A111A | 4.75 | 35 | 250 | 4660 | 1365 | 485 | 9.61 | 2.81 | 39-09 | ○ | | | | | | |
| 39A121A | 5.0 | 35 | 250 | 4840 | 1420 | 505 | 9.58 | 2.81 | 39-09 | ○ | | | | | | |
| 39A131A | 5.25 | 35 | 250 | 4960 | 1455 | 540 | 9.19 | 2.69 | 39-06 | ○ | | | | | | CB |
| 39A131F | 5.25 | 15 | 300 | 4960 | 1455 | 600 | 8.27 | 2.43 | 39-07 | ○ | | | | | | |
| 39A1D1F | 5.5 | 20 | 300 | 5200 | 1520 | 655 | 7.94 | 2.32 | 39-07 | ○ | | | | | | |
| 39A141A | 5.75 | 35 | 250 | 5475 | 1605 | 560 | 9.78 | 2.87 | 39-09 | ○ | | | | | | |
| 39A151A | 6.25 | 35 | 250 | 6030 | 1765 | 620 | 9.73 | 2.85 | 39-09 | ○ | ○ | | | | | |
| 39A171A | 7.0 | 35 | 250 | 6845 | 2005 | 710 | 9.64 | 2.82 | 39-06 | ○ | | | | | | |
| 39A181A | 7.25 | 35 | 250 | 7085 | 2075 | 725 | 9.77 | 2.86 | 39-06 | ○ | | | | | | |
| 39A191A | 7.75 | 40 | 250 | 7620 | 2230 | 800 | 9.53 | 2.79 | 39-06 | ○ | | | | | | |
| 39A201A | 8.1 | 40 | 250 | 7935 | 2325 | 845 | 9.39 | 2.75 | 39-06 | ○ | | | | | | |
| 39A221A | 9.0 | 40 | 250 | 8890 | 2605 | 940 | 9.46 | 2.77 | 39-06 | ○ | | | | | | |
| 44A201A | 8.1 | 60 | 250 | 8035 | 2355 | 800 | 10.04 | 2.94 | 44-07 | ○ | | | | | | |
| 44A211A | 8.35 | 60 | 250 | 8315 | 2435 | 830 | 10.02 | 2.93 | 44-07 | ○ | | | | | | |
| 44A221A | 8.9 | 60 | 250 | 8890 | 2605 | 885 | 10.05 | 2.94 | 44-07 | ○ | | | | | | Inmetro |
| 44A231A | 9.2 | 60 | 250 | 8930 | 2615 | 950 | 9.40 | 2.75 | 44-07 | ○ | | | | | | CB |
| 44A231B | 9.2 | 60 | 250 | 9205 | 2695 | 920 | 10.01 | 2.93 | 44-07 | ○ | | | | | | |
| 44A261A | 10.3 | 60 | 250 | 10375 | 3040 | 1025 | 10.12 | 2.97 | 44-07 | ○ | | | | | | |
| 44A271A | 10.8 | 60 | 250 | 10715 | 3135 | 1075 | 9.97 | 2.92 | 44-07 | ○ | | | | | | |
| 44A281A | 11.4 | 60 | 250 | 10910 | 3195 | 1175 | 9.29 | 2.72 | 44-02 | ○ | | | | | | CB |
| 44A281B | 11.4 | 60 | 250 | 11230 | 3290 | 1125 | 9.98 | 2.92 | 44-07 | ○ | | | | | | |
| 44A301A | 11.9 | 60 | 250 | 11805 | 3455 | 1190 | 9.92 | 2.90 | 44-07 | ○ | | | | | | |
| 44A321A | 12.8 | 60 | 250 | 13055 | 3825 | 1290 | 10.12 | 2.97 | 44-02 | ○ | | | | | | |
| 44A341A | 13.5 | 60 | 250 | 13630 | 3990 | 1375 | 9.91 | 2.90 | 44-02 | ○ | | | | | | |

R410A 1Φ 208-230V / 60Hz

Testing Condition : ASHRAE/T

| Model | Disp. c.c. | Capacitor | | Cooling Capacity | | Input Power W | EER Btu/h.W | COP W/W | Outline Drawing | Safety Recognition | | | | | | |
|---------|---------------|-----------|-----|------------------|------|------------------|----------------|------------|-----------------|--------------------|-----|-----|-----|-----|--------|---------|
| | | μF | VAC | Btu/h | W | | | | | C-UL | VPC | TUV | CCC | VDE | Others | |
| 39A142A | 5.75 | 15 | 400 | 5555 | 1625 | 575 | 9.66 | 2.83 | 39-09 | ○ | | | | | | |
| 39A142I | 5.75 | 15 | 400 | 5555 | 1625 | 575 | 9.66 | 2.83 | 39-09 | ○ | | | | | | |
| 39A162A | 6.75 | 20 | 370 | 6490 | 1900 | 655 | 9.91 | 2.90 | 39-06 | ○ | ○ | | | | | |
| 39A172A | 7.0 | 20 | 370 | 6825 | 2000 | 695 | 9.82 | 2.88 | 39-06 | ○ | | | | | | |
| 44A202A | 8.1 | 25 | 370 | 7895 | 2310 | 785 | 10.06 | 2.94 | 44-07 | ○ | ○ | | | | | CB |
| 44A202I | 8.1 | 25 | 370 | 7895 | 2310 | 785 | 10.06 | 2.94 | 44-07 | ○ | | | | | | |
| 44A212A | 8.35 | 25 | 370 | 8315 | 2435 | 820 | 10.14 | 2.97 | 44-07 | ○ | ○ | | | | | Inmetro |
| 44A222A | 8.9 | 30 | 370 | 8830 | 2585 | 860 | 10.27 | 3.01 | 44-07 | ○ | ○ | | | | | CB |

R410A 1Φ 208-230V / 60Hz

Testing Condition : ASHRAE/T

| Model | Disp. c.c. | Capacitor | | Cooling Capacity | | Input Power W | EER Btu/h.W | COP W/W | Outline Drawing | Safety Recognition | | | | | | |
|---------|---------------|-----------|-----|------------------|------|------------------|----------------|------------|-----------------|--------------------|-----|-----|-----|-----|--------|---------|
| | | μF | VAC | Btu/h | W | | | | | C-UL | VPC | TUV | CCC | VDE | Others | |
| 44A232A | 9.2 | 30 | 370 | 9025 | 2645 | 900 | 10.03 | 2.94 | 44-07 | | | | | | | |
| 44A262A | 10.3 | 30 | 370 | 10000 | 2930 | 1010 | 9.90 | 2.90 | 44-02 | ○ | | | | | | |
| 44A262B | 10.3 | 30 | 370 | 10275 | 3010 | 1005 | 10.22 | 3.00 | 44-07 | ○ | ○ | | | | | Inmetro |
| 44A272A | 10.8 | 30 | 370 | 10850 | 3180 | 1060 | 10.24 | 3.00 | 44-07 | ○ | ○ | | | | | Inmetro |
| 44A282A | 11.4 | 30 | 370 | 11230 | 3290 | 1125 | 9.98 | 2.92 | 44-07 | ○ | ○ | | | | | CB |
| 44A282N | 11.4 | 30 | 370 | 11390 | 3335 | 1140 | 9.99 | 2.93 | 44-06 | | ○ | | | | | |
| 44A282I | 11.4 | 30 | 370 | 11230 | 3290 | 1125 | 9.98 | 2.92 | 44-07 | | | | | | | |
| 44A302A | 11.9 | 30 | 370 | 11965 | 3505 | 1170 | 10.23 | 3.00 | 44-07 | ○ | ○ | | | | | |
| 44A302N | 11.9 | 30 | 370 | 11965 | 3505 | 1200 | 9.97 | 2.92 | 44-06 | | ○ | | | | | |
| 44A322A | 12.8 | 35 | 370 | 12795 | 3745 | 1260 | 10.15 | 2.97 | 44-02 | ○ | ○ | | | | | CB |
| 44A342A | 13.5 | 30 | 370 | 13570 | 3975 | 1360 | 9.98 | 2.92 | 44-02 | ○ | ○ | | | | | |
| 50A362Q | 14.4 | 30 | 370 | 14505 | 4245 | 1410 | 10.29 | 3.01 | 50-03 | ○ | ○ | | | | | |
| 50A382Q | 14.9 | 35 | 370 | 15275 | 4475 | 1480 | 10.32 | 3.02 | 50-03 | | ○ | | | | | |
| 50A422Q | 16.6 | 40 | 370 | 16945 | 4960 | 1650 | 10.27 | 3.01 | 50-03 | | ○ | | | | | |
| 50A452P | 17.7 | 40 | 370 | 17995 | 5270 | 1805 | 9.97 | 2.92 | 50-03 | ○ | ○ | | | | | CB |
| 50A492P | 19.2 | 45 | 370 | 19525 | 5715 | 1970 | 9.91 | 2.90 | 50-03 | | ○ | | | | | |
| 50A522V | 20.2 | 50 | 370 | 20675 | 6055 | 2030 | 10.18 | 2.98 | 50-03 | | ○ | | | | | |
| 50A562V | 22.2 | 50 | 370 | 22735 | 6660 | 2250 | 10.10 | 2.96 | 50-03 | | ○ | | | | | |
| 50A612V | 23.5 | 45 | 400 | 23810 | 6970 | 2450 | 9.72 | 2.84 | 50-03 | ○ | ○ | | | | | |

R410A 1Φ 220-240V / 50Hz

Testing Condition : ASHRAE/T

| Model | Disp. c.c. | Capacitor | | Cooling Capacity | | Input Power W | EER Btu/h.W | COP W/W | Outline Drawing | Safety Recognition | | | | | | |
|---------|---------------|-----------|-----|------------------|------|------------------|----------------|------------|-----------------|--------------------|-----|-----|-----|-----|--------|-------|
| | | μF | VAC | Btu/h | W | | | | | C-UL | VPC | TUV | CCC | VDE | Others | |
| 39A143A | 7.5 | 20 | 370 | 5755 | 1685 | 630 | 9.13 | 2.67 | 39-06 | | | ○ | ○ | | | |
| 39A173A | 8.6 | 25 | 370 | 6825 | 2000 | 750 | 9.10 | 2.67 | 39-06 | | | ○ | ○ | | | CE |
| 44A203A | 10.3 | 40 | 370 | 8055 | 2360 | 850 | 9.48 | 2.78 | 44-02 | | | ○ | ○ | | | CB |
| 44A203B | 10.3 | 40 | 370 | 8370 | 2450 | 860 | 9.73 | 2.85 | 44-07 | | | ○ | ○ | | | |
| 44A233A | 11.4 | 40 | 370 | 9005 | 2640 | 930 | 9.68 | 2.84 | 44-02 | | | ○ | ○ | | | CB,CE |
| 44A263A | 13.2 | 35 | 370 | 10275 | 3010 | 1090 | 9.43 | 2.76 | 44-02 | | | ○ | | | | CB |
| 44A263B | 13.2 | 35 | 370 | 10795 | 3160 | 1115 | 9.68 | 2.83 | 44-02 | | | ○ | ○ | | | |
| 44A273A | 13.5 | 30 | 370 | 10990 | 3220 | 1150 | 9.56 | 2.80 | 44-02 | | | ○ | | | | CB |
| 44A273B | 13.5 | 35 | 370 | 10930 | 3200 | 1120 | 9.76 | 2.86 | 44-02 | | | ○ | ○ | | | |
| 44A293A | 14.4 | 30 | 370 | 11430 | 3345 | 1220 | 9.37 | 2.74 | 44-02 | | | ○ | ○ | | | CB |
| 44A313A | 15.6 | 35 | 370 | 12775 | 3740 | 1325 | 9.64 | 2.82 | 44-02 | | | ○ | ○ | | | CB |
| 48A313A | 14.9 | 30 | 370 | 12065 | 3530 | 1290 | 9.35 | 2.74 | 48-02 | | | ○ | | | | |
| 48A313N | 14.9 | 30 | 370 | 12140 | 3555 | 1290 | 9.41 | 2.76 | 48-03 | | | | | | | |
| 48A313P | 14.9 | 30 | 370 | 12100 | 3545 | 1245 | 9.72 | 2.85 | 48-03 | | | ○ | ○ | | | CE |
| 48A343A | 16.0 | 30 | 370 | 13135 | 3845 | 1390 | 9.45 | 2.77 | 48-02 | | | ○ | | | | |
| 48A413A | 20.2 | 30 | 370 | 16270 | 4765 | 1770 | 9.19 | 2.69 | 48-02 | | | ○ | | | | |
| 48A473U | 23.5 | 35 | 370 | 19045 | 5580 | 2050 | 9.29 | 2.72 | 48-03 | | | ○ | | | | |

定速压缩机/Constant-Speed Compressor



R410A 1Φ 220-240V / 50Hz

Testing Condition : ASHRAE/T

| Model | Disp. c.c. | Capacitor μF VAC | Cooling Capacity | | Input Power W | EER Btu/h.W | COP W/W | Outline Drawing | Safety Recognition | | | | | |
|---------|---------------|---------------------|------------------|------|---------------------|----------------|------------|--------------------|--------------------|-----|-----|-----|-----|--------|
| | | | Btu/h | W | | | | | C-UL | VPC | TUV | CCC | VDE | Others |
| 50A403V | 19.2 | 35 400 | 15950 | 4670 | 1600 | 9.97 | 2.92 | 50-03 | | | | | | |
| 50A433V | 20.8 | 35 370 | 17180 | 5030 | 1740 | 9.87 | 2.89 | 50-03 | | | | | | |
| 50A453V | 21.4 | 35 370 | 17895 | 5240 | 1810 | 9.89 | 2.90 | 50-03 | | | ○ | | | |
| 50A473V | 22.2 | 45 400 | 18690 | 5475 | 1890 | 9.89 | 2.90 | 50-03 | | | ○ | | | |

R410A 1Φ 100/100-110V 50/60Hz

Testing Condition : ASHRAE/T

| Model | Disp. c.c. | Capacitor μF VAC | Cooling Capacity | | Input Power W | EER Btu/h.W | COP W/W | Outline Drawing | Safety Recognition | | | | | |
|---------|---------------|---------------------|------------------|------|---------------------|----------------|------------|--------------------|--------------------|-----|-----|-----|-----|--------|
| | | | Btu/h | W | | | | | C-UL | VPC | TUV | CCC | VDE | Others |
| 39A155A | 50Hz | 6.25 60 250 | 4960 | 1455 | 565 | 8.78 | 2.58 | 39-06 | | | | | | |
| | | | | | | | | | | | | | | |
| 39A175A | 50Hz | 7.0 60 250 | 5555 | 1625 | 630 | 8.82 | 2.58 | 39-06 | | | | | | |
| | | | | | | | | | | | | | | |

R410A 1Φ 115-127V / 60Hz

Testing Condition : ASHRAE/T

| Model | Disp. c.c. | Capacitor μF VAC | Cooling Capacity | | Input Power W | EER Btu/h.W | COP W/W | Outline Drawing | Safety Recognition | | | | | |
|---------|---------------|---------------------|------------------|------|---------------------|----------------|------------|--------------------|--------------------|-----|-----|-----|-----|---------|
| | | | Btu/h | W | | | | | C-UL | VPC | TUV | CCC | VDE | Others |
| 44A226A | 8.9 | 60 250 | 9005 | 2640 | 905 | 9.95 | 2.92 | 44-07 | | | | | | Inmetro |

R410A 1Φ 265V / 60Hz

Testing Condition : ASHRAE/T

| Model | Disp. c.c. | Capacitor μF VAC | Cooling Capacity | | Input Power W | EER Btu/h.W | COP W/W | Outline Drawing | Safety Recognition | | | | | |
|---------|---------------|---------------------|------------------|------|---------------------|----------------|------------|--------------------|--------------------|-----|-----|-----|-----|--------|
| | | | Btu/h | W | | | | | C-UL | VPC | TUV | CCC | VDE | Others |
| 39A147A | 5.75 | 15 400 | 5555 | 1625 | 575 | 9.66 | 2.83 | 39-09 | ○ | | | | | |
| 39A167A | 6.75 | 15 370 | 6545 | 1915 | 655 | 9.99 | 2.92 | 39-06 | ○ | | | | | |
| 44A207A | 8.1 | 25 370 | 7915 | 2320 | 790 | 10.02 | 2.94 | 44-07 | ○ | | | | | |
| 44A267A | 10.3 | 30 370 | 10395 | 3045 | 1025 | 10.14 | 2.97 | 44-07 | ○ | | | | | |
| 44A287A | 11.4 | 30 370 | 11290 | 3305 | 1120 | 10.08 | 2.95 | 44-07 | ○ | | | | | |
| 50A367Q | 14.4 | 25 420 | 14245 | 4170 | 1405 | 10.14 | 2.97 | 50-03 | ○ | | | | | |

B 典型应用: 北美/中国高效空调机
Typical Application: US/China Hi-EER Air-Conditioner

R410A 1Φ 115V / 60Hz

Testing Condition : ASHRAE/T MAT

| Model | Disp. c.c. | Capacitor μF VAC | Cooling Capacity | | Input Power W | EER Btu/h.W | COP W/W | Outline Drawing | Safety Recognition | | | | | |
|---------|---------------|---------------------|------------------|------|---------------------|----------------|------------|--------------------|--------------------|-----|-----|-----|-----|--------|
| | | | Btu/h | W | | | | | C-UL | VPC | TUV | CCC | VDE | Others |
| 39B071A | 3.25 | 15 270 | 3015 | 885 | 375 | 8.04 | 2.36 | 39-07 | | | | | | |
| | | | 3890 | 1140 | 315 | 12.35 | 3.62 | | | | | | | |
| 39B111A | 4.75 | 35 250 | 4585 | 1340 | 475 | 9.65 | 2.82 | 39-09 | | | | | | |
| | | | 5890 | 1725 | 385 | 15.30 | 4.48 | | | | | | | |
| 39B131A | 5.52 | 35 250 | 4980 | 1460 | 520 | 9.58 | 2.81 | 39-09 | | | | | | |
| | | | 6565 | 1925 | 430 | 15.27 | 4.48 | | | | | | | |

定速压缩机/Constant-Speed Compressor

R410A 1Φ 115V / 60Hz

Testing Condition : ASHRAE/T MAT

| Model | Disp. c.c. | Capacitor μF VAC | Cooling Capacity | | Input Power W | EER Btu/h.W | COP W/W | Outline Drawing | Safety Recognition | | | | | |
|---------|---------------|---------------------|------------------|------|---------------------|----------------|------------|--------------------|--------------------|-----|-----|-----|-----|--------|
| | | | Btu/h | W | | | | | C-UL | VPC | TUV | CCC | VDE | Others |
| 39B161A | 6.75 | 35 250 | 6545 | 1915 | 680 | 9.63 | 2.82 | 39-06 | | | | | | |
| | | | 8510 | 2490 | 560 | 15.20 | 4.45 | | | | | | | |
| 39B171A | 7.0 | 35 250 | 6765 | 1980 | 705 | 9.60 | 2.81 | 39-26 | | | | | | |
| | | | 8790 | 2575 | 575 | 15.29 | 4.48 | | | | | | | |
| 44B2B1A | 8.6 | 55 250 | 8550 | 2505 | 855 | 10.00 | 2.93 | 44-07 | | | | | | |
| | | | 10870 | 3185 | 695 | 15.64 | 4.58 | | | | | | | |
| 44B261A | 10.3 | 55 250 | 10255 | 3005 | 1030 | 9.96 | 2.92 | 44-07 | ○ | | | | | |
| | | | 13115 | 3840 | 835 | 15.71 | 4.60 | | | | | | | |
| 44B311A | 12.4 | 60 250 | 12005 | 3515 | 1225 | 9.80 | 2.87 | 44-02 | ○ | | | | | |
| | | | 15795 | 4625 | 1015 | 15.56 | 4.56 | | | | | | | |

R410A 1Φ 208-230V / 60Hz

Testing Condition : ASHRAE/T MAT

| Model | Disp. c.c. | Capacitor μF VAC | Cooling Capacity | | Input Power W | EER Btu/h.W | COP W/W | Outline Drawing | Safety Recognition | | | | | |
|---------|---------------|---------------------|------------------|------|---------------------|----------------|------------|--------------------|--------------------|-----|-----|-----|-----|--------|
| | | | Btu/h | W | | | | | C-UL | VPC | TUV | CCC | VDE | Others |
| 39B212A | 8.35 | 25 370 | 8055 | 2360 | 840 | 9.59 | 2.81 | 39-06 | | ○ | | | | |
| | | | 10435 | 3055 | 695 | 15.01 | 4.40 | | | | | | | |
| 50B562X | 22.2 | 50 370 | 22695 | 6645 | 2245 | 10.11 | 2.96 | 50-04 | | ○ | | | | |
| | | | 29085 | 8515 | 1925 | 15.11 | 4.42 | | | | | | | |

R410A 1Φ 220-240V / 50Hz

Testing Condition : ASHRAE/T MAT

| Model | Disp. c.c. | Capacitor μF VAC | Cooling Capacity | | Input Power W | EER Btu/h.W | COP W/W | Outline Drawing | Safety Recognition | | | | | |
|---------|---------------|---------------------|------------------|------|---------------------|----------------|------------|--------------------|--------------------|-----|-----|-----|-----|--------|
| | | | Btu/h | W | | | | | C-UL | VPC | TUV | CCC | VDE | Others |
| 50B403W | 19.2 | 35 400 | 16110 | 4720 | 1610 | 10.01 | 2.93 | 50-03 | | | | | | |
| | | | 20675 | 6055 | 1310 | 15.78 | 4.62 | | | | | | | |

R410A 1Φ 265V / 60Hz

Testing Condition : ASHRAE/T MAT

| Model | Disp. c.c. | Capacitor μF VAC | Cooling Capacity | | Input Power W | EER Btu/h.W | COP W/W | Outline Drawing | Safety Recognition | | | | | |
|---------|---------------|---------------------|------------------|------|---------------------|----------------|------------|--------------------|--------------------|-----|-----|-----|-----|--------|
| | | | Btu/h | W | | | | | C-UL | VPC | TUV | CCC | VDE | Others |
| 44B207A | 8.1 | 20 370 | 7835 | 2295 | 785 | 9.98 | 2.92 | 44-07 | ○ | | | | | |
| | | | 10020 | 2935 | 645 | 15.53 | 4.55 | | | | | | | |
| 44B267A | 10.3 | 25 370 | 10160 | 2975 | 1015 | 10.01 | 2.93 | 44-07 | ○ | | | | | |
| | | | 13095 | 3835 | 850 | 15.41 | 4.51 | | | | | | | |

N 典型应用: 北美单元式空调机
Typical Application: US Unitary Air-Conditioner

R410A 1Φ 208-230V / 60Hz

Testing Condition : ASHRAE/T MAT

| Model | Disp. c.c. | Capacitor μF VAC | Cooling Capacity | | Input Power W | EER Btu/h.W | COP W/W | Outline Drawing | Safety Recognition | | | | | |
|---------|---------------|---------------------|------------------|------|---------------------|----------------|------------|--------------------|--------------------|-----|-----|-----|-----|--------|
| | | | Btu/h | W | | | | | C-UL | VPC | TUV | CCC | VDE | Others |
| 50N382X | 14.9 | 35 370 | 15275 | 4475 | 1480 | 10.32 | 3.02 | 50-04(b) | ○ | | | | | |
| | | | 18590 | 5445 | 1080 | 17.21 | 5.04 | | | | | | | |
| 50N492X | 19.2 | 40 370 | 19640 | 5750 | 1890 | 10.39 | 3.04 | 50-04((b)) | | | | | | |
| | | | 24285 | 7110 | 1385 | 17.53 | 5.13 | | | | | | | |
| 50N512X | 19.7 | 40 370 | 20040 | 5870 | 1980 | 10.12 | 2.96 | 50-04((b)) | | | | | | |
| | | | 24920 | 7295 | 1430 | 17.43 | 5.10 | | | | | | | |

定速压缩机/Constant-Speed Compressor



典型应用: 一般空调机/部份用于热泵干衣机
Typical Application: General Air-Conditioner / Some for Heat-Pump Dryer

R407C 1Φ 115V / 60Hz

Testing Condition : ASHRAE/T

| Model | Disp. c.c. | Capacitor μF VAC | Cooling Capacity | | Input Power W | EER Btu/h.W | COP W/W | Outline Drawing | Safety Recognition | | | | | | |
|---------|---------------|---------------------|------------------|------|---------------------|----------------|------------|--------------------|--------------------|-----|-----|-----|-----|--------|--|
| | | | Btu/h | W | | | | | C-UL | VPC | TUV | CCC | VDE | Others | |
| 39C121B | 7.0 | 15 270 | 4920 | 1440 | 580 | 8.48 | 2.48 | 39-07 | | | | | | | |

R407C 1Φ 208-230V / 60Hz

Testing Condition : ASHRAE/T

| Model | Disp. c.c. | Capacitor μF VAC | Cooling Capacity | | Input Power W | EER Btu/h.W | COP W/W | Outline Drawing | Safety Recognition | | | | | | |
|---------|---------------|---------------------|------------------|------|---------------------|----------------|------------|--------------------|--------------------|-----|-----|-----|-----|--------|--|
| | | | Btu/h | W | | | | | C-UL | VPC | TUV | CCC | VDE | Others | |
| 39C172B | 10.4 | 20 370 | 7300 | 2140 | 720 | 10.14 | 2.97 | 39-01 | | | | | | | |

R407C 1Φ 220-240V / 50Hz

Testing Condition : ASHRAE/T
HPD

| Model | Disp. c.c. | Capacitor μF VAC | Cooling Capacity | | Input Power W | EER Btu/h.W | COP W/W | Outline Drawing | Safety Recognition | | | | | | |
|---------|---------------|---------------------|------------------|--------------|---------------------|----------------|--------------|--------------------|--------------------|-----|-----|-----|-----|--------|----|
| | | | Btu/h | W | | | | | C-UL | VPC | TUV | CCC | VDE | Others | |
| 39C123B | 8.1 | 20 370 | 4605 6645 | 1350 1945 | 460 655 | 10.01 10.15 | 2.93 2.97 | 39-01 | | | ○ | ○ | ○ | ○ | CE |
| 39C123D | 8.1 | 20 370 | 4820 6785 | 1410 1985 | 490 690 | 9.84 9.83 | 2.88 2.88 | 39-08 | | | | | | | |
| 39C123H | 8.1 | 20 370 | 4605 6645 | 1350 1945 | 460 655 | 10.01 10.15 | 2.93 2.97 | 39-01 | | | | | | | |
| 39C143C | 10.4 | 20 370 | 6070 8770 | 1780 2570 | 610 890 | 9.95 9.85 | 2.92 2.89 | 39-01 | | | ○ | | | ○ | CE |
| 39C163B | 11.1 | 20 370 | 6430 | 1880 | 650 | 9.89 | 2.89 | 39-01 | | | ○ | | | | |
| 44C173A | 12.4 | 40 370 | 7180 | 2105 | 695 | 10.33 | 3.03 | 44-02 | | | ○ | | | | |
| 44C193A | 13.2 | 40 370 | 7540 | 2210 | 720 | 10.47 | 3.07 | 44-02 | | | ○ | | | | |
| 44C203A | 14.7 | 40 370 | 8450 | 2475 | 815 | 10.37 | 3.04 | 44-02 | | | ○ | | | | |
| 44C213A | 15.6 | 40 370 | 9005 | 2640 | 865 | 10.41 | 3.05 | 44-02 | | | ○ | | | | |
| 44C233A | 16.4 | 40 370 | 9365 | 2740 | 905 | 10.35 | 3.03 | 44-02 | | | ○ | ○ | | | |
| 44C233B | 16.4 | 25 370 | 9365 | 2740 | 940 | 9.96 | 2.91 | 44-02 | | | ○ | | | | |
| 44C243B | 16.8 | 25 370 | 9640 | 2825 | 965 | 9.99 | 2.93 | 44-02 | | | ○ | | | | |
| 44C253A | 18.1 | 35 370 | 10475 | 3070 | 1020 | 10.27 | 3.01 | 44-02 | | | ○ | | | | |
| 44C273A | 19.1 | 35 370 | 11070 | 3240 | 1090 | 10.16 | 2.97 | 44-02 | | | ○ | | | | |
| 48C313A | 21.4 | 30 370 | 12915 | 3780 | 1280 | 10.09 | 2.95 | 48-02 | | | ○ | | | | |
| 48C313N | 21.4 | 30 370 | 12915 | 3780 | 1280 | 10.09 | 2.95 | 48-03 | | | | | | | |
| 48C323A | 22.2 | 25 370 | 13295 | 3895 | 1310 | 10.15 | 2.97 | 48-02 | | | ○ | | | | |
| 48C323N | 22.2 | 30 370 | 13410 | 3930 | 1310 | 10.24 | 3.00 | 48-03 | | | ○ | | | | |
| 48C343A | 23.5 | 30 370 | 14125 | 4135 | 1380 | 10.24 | 3.00 | 48-02 | | | ○ | | | | |
| 48C343N | 23.5 | 30 370 | 14125 | 4135 | 1380 | 10.24 | 3.00 | 48-03 | | | | | | | |
| 48C373A | 25.8 | 30 370 | 15595 | 4565 | 1580 | 9.87 | 2.89 | 48-02 | | | ○ | | | | |
| 48C403A | 27.1 | 30 370 | 16505 | 4835 | 1670 | 9.88 | 2.90 | 48-02 | | | ○ | | | | |
| 48C413A | 28.0 | 30 370 | 16745 | 4905 | 1690 | 9.91 | 2.90 | 48-02 | | | ○ | ○ | | | |
| 48C453A | 30.6 | 35 370 | 18290 | 5355 | 1860 | 9.83 | 2.88 | 48-07 | | | | ○ | | | |
| 48C473A | 32.5 | 35 370 | 19245 | 5635 | 1970 | 9.77 | 2.86 | 48-07 | | | ○ | ○ | | | |
| 48C473U | 32.5 | 35 370 | 19245 | 5635 | 1950 | 9.87 | 2.89 | 48-08 | | | | | | | |

定速压缩机/Constant-Speed Compressor



R407C 1Φ 100/100-110V 50/60Hz

Testing Condition : ASHRAE/T

| Model | Disp. c.c. | Capacitor μF VAC | Cooling Capacity | | Input Power W | EER Btu/h.W | COP W/W | Outline Drawing | Safety Recognition | | | | | | |
|---------|---------------|---------------------|------------------|------|---------------------|----------------|------------|--------------------|--------------------|-----|-----|-----|-----|--------|--|
| | | | Btu/h | W | | | | | C-UL | VPC | TUV | CCC | VDE | Others | |
| 39C085A | 4.75 | 25 250 | 2740 | 800 | 300 | 9.13 | 2.67 | 39-06 | | | | | | | |
| | | | 3295 | 965 | 340 | 9.69 | 2.84 | | | | | | | | |
| 39C125A | 7.0 | 25 250 | 4010 | 1175 | 415 | 9.66 | 2.83 | 39-06 | | | | | | | |
| | | | 4800 | 1405 | 495 | 9.70 | 2.84 | | | | | | | | |

R407C 1Φ 200/200-220V 50/60Hz

Testing Condition : ASHRAE/T

| Model | Disp. c.c. | Capacitor μF VAC | Cooling Capacity | | Input Power W | EER Btu/h.W | COP W/W | Outline Drawing | Safety Recognition | | | | | | |
|---------|---------------|---------------------|------------------|------|---------------------|----------------|------------|--------------------|--------------------|-----|-----|-----|-----|--------|--|
| | | | Btu/h | W | | | | | C-UL | VPC | TUV | CCC | VDE | Others | |
| 39C088A | 4.75 | 15 370 | 2780 | 815 | 300 | 9.27 | 2.72 | 39-06 | | | | | | | |
| | | | 3335 | 975 | 350 | 9.53 | 2.79 | | | | | | | | |
| 39C128A | 7.0 | 15 370 | 4010 | 1175 | 400 | 10.03 | 2.94 | 39-06 | | | | | | | |
| | | | 4840 | 1420 | 480 | 10.08 | 2.96 | | | | | | | | |
| 39C178B | 10.4 | 25 370 | 6010 | 1760 | 615 | 9.77 | 2.86 | 39-01 | | | | | | | |
| | | | 7200 | 2110 | 710 | 10.14 | 2.97 | | | | | | | | |
| 48C428A | 23.5 | 50 370 | 14145 | 4145 | 1380 | 10.25 | 3.00 | 48-02 | | | | | | | |
| | | | 16805 | 4920 | 1640 | 10.25 | 3.00 | | | | | | | | |



典型应用: 一般空调机 / 除湿机
Typical Application: General Air-Conditioner / Dehumidifier

R134a 1Φ 115V / 60Hz

Testing Condition : ASHRAE/T

| Model | Disp. c.c. | Capacitor μF VAC | Cooling Capacity | | Input Power W | EER Btu/h.W | COP W/W | Outline Drawing | Safety Recognition | | | | | | |
|---------|---------------|---------------------|------------------|------|---------------------|----------------|------------|--------------------|--------------------|-----|-----|-----|-----|--------|--|
| | | | Btu/h | W | | | | | C-UL | VPC | TUV | CCC | VDE | Others | |
| 39E081A | 7.0 | 15 270 | 3255 | 955 | 370 | 8.80 | 2.58 | 39-07 | ○ | | | | | | |
| 39E091B | 7.5 | 15 270 | 3490 | 1025 | 380 | 9.18 | 2.70 | 39-07 | ○ | | | | | | |
| 39E101A | 8.6 | 15 300 | 4125 | 1210 | 470 | 8.78 | 2.57 | 39-07 | ○ | | | | | | |
| 39E111A | 9.5 | 15 300 | 4525 | 1325 | 510 | 8.87 | 2.60 | 39-03 | ○ | | | | | | |
| 39E121A | 10.4 | 15 300 | 4960 | 1455 | 555 | 8.94 | 2.62 | 39-03 | ○ | | | | | | |
| 39E131A | 11.4 | 15 300 | 5395 | 1580 | 600 | 8.99 | 2.63 | 39-03 | ○ | | | | | | |
| 39E131C | 11.4 | 35 250 | 5375 | 1575 | 520 | 10.34 | 3.03 | 39-04 | | | | | | | |

R134a 1Φ 208-230V / 60Hz

Testing Condition : ASHRAE/T

| Model | Disp. c.c. | Capacitor μF VAC | Cooling Capacity | | Input Power W | EER Btu/h.W | COP W/W | Outline Drawing | Safety Recognition | | | | | | |
|---------|---------------|---------------------|------------------|------|---------------------|----------------|------------|--------------------|--------------------|-----|-----|-----|-----|--------|--|
| | | | Btu/h | W | | | | | C-UL | VPC | TUV | CCC | VDE | Others | |
| 39E102A | 8.6 | 10 370 | 4065 | 1190 | 445 | 9.13 | 2.67 | 39-07 | | | | | | | |

R134a 1Φ 220-240V / 50Hz

Testing Condition : ASHRAE/T

| Model | Disp. c.c. | Capacitor μF VAC | Cooling Capacity | | Input Power W | EER Btu/h.W | COP W/W | Outline Drawing | Safety Recognition | | | | | | |
|---------|---------------|---------------------|------------------|------|---------------------|----------------|------------|--------------------|--------------------|-----|-----|-----|-----|--------|--|
| | | | Btu/h | W | | | | | C-UL | VPC | TUV | CCC | VDE | Others | |
| 39E043A | 4.75 | 9 370 | 1845 | 540 | 195 | 9.46 | 2.77 | 39-07 | | | | | | | |
| 39E063B | 6.5 | 12 330 | 2540 | 745 | 265 | 9.58 | 2.81 | 39-07 | | | ○ | | | | |
| 39E073B | 7.5 | 12 330 | 2875 | 840 | 300 | 9.58 | 2.80 | 39-07 | | | ○ | ○ | ○ | | |
| 39E103A | 10.4 | 12 420 | 4045 | 1185 | 460 | 8.79 | 2.58 | 39-03 | | | ○ | ○ | | | |
| 39E113A | 11.4 | 12 420 | 4445 | 1300 | 480 | 9.26 | 2.71 | 39-03 | | | ○ | | | | |



定速压缩机/Constant-Speed Compressor



定速压缩机/Constant-Speed Compressor

F 典型应用: 热泵干衣机
Typical Application: Heat-Pump Dryer

R134a 1Φ 115V / 60Hz Testing Condition: ASHRAE/T HPD

| Model | Disp. c.c. | Capacitor μF | Cooling Capacity | | Input Power W | EER Btu/h.W | COP W/W | Outline Drawing | Safety Recognition | | | | | | |
|---------|------------|--------------|------------------|------|---------------|-------------|---------|-----------------|--------------------|-----|-----|-----|-----|--------|--|
| | | | Btu/h | W | | | | | C-UL | VPC | TUV | CCC | VDE | Others | |
| 39F131C | 11.4 | 40 | 250 | 5455 | 1600 | 535 | 10.20 | 39-04 | | | | | | | |
| | | | | 8235 | 2410 | 765 | 10.76 | | | | | | | | |

R134a 1Φ 208-230V / 60Hz Testing Condition: ASHRAE/T HPD

| Model | Disp. c.c. | Capacitor μF | Cooling Capacity | | Input Power W | EER Btu/h.W | COP W/W | Outline Drawing | Safety Recognition | | | | | | |
|---------|------------|--------------|------------------|-------|---------------|-------------|---------|-----------------|--------------------|-----|-----|-----|-----|--------|--|
| | | | Btu/h | W | | | | | C-UL | VPC | TUV | CCC | VDE | Others | |
| 44F172A | 14.7 | 30 | 370 | 6965 | 2040 | 650 | 10.72 | 44-02 | | | | | | | |
| | | | | 10575 | 3095 | 890 | 11.88 | | | | | | | | |

R134a 1Φ 220-240V / 50Hz Testing Condition: ASHRAE/T HPD

| Model | Disp. c.c. | Capacitor μF | Cooling Capacity | | Input Power W | EER Btu/h.W | COP W/W | Outline Drawing | Safety Recognition | | | | | | |
|---------|------------|--------------|------------------|-------|---------------|-------------|---------|-----------------|--------------------|-----|-----|-----|-----|--------|----|
| | | | Btu/h | W | | | | | C-UL | VPC | TUV | CCC | VDE | Others | |
| 39F0H3C | 8.1 | 18 | 370 | 3275 | 960 | 345 | 9.49 | 39-08 | | | | | | | |
| | | | | 4920 | 1440 | 460 | 10.70 | | | | | | | | |
| 39F103B | 10.4 | 20 | 370 | 4205 | 1230 | 410 | 10.26 | 39-01 | | | | | | | |
| | | | | 6270 | 1835 | 575 | 10.90 | | | | | | | | |
| 39F103C | 10.4 | 18 | 370 | 4225 | 1240 | 425 | 9.94 | 39-04 | | | | | | | |
| | | | | 6270 | 1835 | 590 | 10.63 | | | | | | | | |
| 39F113B | 11.4 | 20 | 370 | 4585 | 1340 | 445 | 10.30 | 39-01 | | | | | | | |
| | | | | 6845 | 2005 | 620 | 11.04 | | | | | | | | |
| 39F113C | 11.4 | 18 | 370 | 4625 | 1355 | 455 | 10.16 | 39-04 | | | | | | | CB |
| | | | | 6865 | 2010 | 655 | 10.48 | | | | | | | | |
| 39F113H | 11.4 | 20 | 370 | 4585 | 1340 | 445 | 10.30 | 39-01 | | | | | | | |
| | | | | 6845 | 2005 | 620 | 11.04 | | | | | | | | |
| 44F193C | 19.1 | 25 | 370 | 7700 | 2255 | 740 | 10.41 | 44-01 | | | | | | | |
| | | | | 11470 | 3360 | 1050 | 10.92 | | | | | | | | |

G 典型应用: 热泵热水器
Typical Application: Heat-Pump Water-Heater

R134a 1Φ 208-230V / 60Hz Testing Condition: ASHRAE/T HPWH

| Model | Disp. c.c. | Capacitor μF | Cooling Capacity | | Input Power W | EER Btu/h.W | COP W/W | Outline Drawing | Safety Recognition | | | | | | |
|---------|------------|--------------|------------------|------|---------------|-------------|---------|-----------------|--------------------|-----|-----|-----|-----|--------|--|
| | | | Btu/h | W | | | | | C-UL | VPC | TUV | CCC | VDE | Others | |
| 39G102A | 8.6 | 10 | 370 | 4045 | 1185 | 375 | 10.79 | 39-06 | | | | | | | |
| | | | | 6130 | 1795 | 535 | 11.46 | | | | | | | | |
| 44G212A | 17.5 | 30 | 370 | 8135 | 2380 | 780 | 10.43 | 44-02 | | | | | | | |
| | | | | 7460 | 2185 | 925 | 8.06 | | | | | | | | |

R134a 1Φ 220-240V / 50Hz Testing Condition: ASHRAE/T HPWH

| Model | Disp. c.c. | Capacitor μF | Cooling Capacity | | Input Power W | EER Btu/h.W | COP W/W | Outline Drawing | Safety Recognition | | | | | | |
|---------|------------|--------------|------------------|------|---------------|-------------|---------|-----------------|--------------------|-----|-----|-----|-----|--------|--|
| | | | Btu/h | W | | | | | C-UL | VPC | TUV | CCC | VDE | Others | |
| 39G113B | 11.4 | 20 | 370 | 4585 | 1340 | 445 | 10.30 | 39-01 | | | | | | | |
| | | | | 4105 | 1205 | 520 | 7.89 | | | | | | | | |
| 44G123A | 12.4 | 25 | 370 | 4820 | 1410 | 450 | 10.71 | 44-02 | | | | | | | |
| | | | | 4485 | 1315 | 530 | 8.46 | | | | | | | | |
| 44G173A | 17.5 | 35 | 370 | 6865 | 2010 | 640 | 10.73 | 44-02 | | | | | | | |
| | | | | 6440 | 1885 | 760 | 8.47 | | | | | | | | |
| 50G243N | 23.5 | 30 | 370 | 9485 | 2775 | 845 | 11.22 | 50-03 | | | | | | | |
| | | | | 8910 | 2610 | 1005 | 8.87 | | | | | | | | |

R 典型应用: 一般空调机 / 除湿机
Typical Application: General Air-Conditioner / Dehumidifier

R22 1Φ 115V / 60Hz Testing Condition: ASHRAE/T

| Model | Disp. c.c. | Capacitor μF | Cooling Capacity | | Input Power W | EER Btu/h.W | COP W/W | Outline Drawing | Safety Recognition | | | | | | |
|---------|------------|--------------|------------------|-------|---------------|-------------|---------|-----------------|--------------------|-----|-----|-----|-----|--------|---------|
| | | | Btu/h | W | | | | | C-UL | VPC | TUV | CCC | VDE | Others | |
| 39R081A | 4.75 | 15 | 270 | 3295 | 965 | 375 | 8.79 | 2.57 | 39-07 | | | | | | |
| 39R101A | 6.25 | 15 | 270 | 4285 | 1255 | 505 | 8.49 | 2.49 | 39-07 | | | | | | |
| 39R111A | 6.75 | 15 | 270 | 4445 | 1300 | 525 | 8.47 | 2.48 | 39-07 | | | | | | |
| 39R121A | 7.0 | 35 | 250 | 4820 | 1410 | 465 | 10.37 | 3.03 | 39-01 | | | | | | |
| 39R121B | 7.0 | 15 | 270 | 4760 | 1395 | 560 | 8.50 | 2.49 | 39-07 | | | | | | |
| 39R131E | 7.5 | 35 | 250 | 5160 | 1510 | 505 | 10.22 | 2.99 | 39-08 | | | | | | |
| 39R131F | 7.75 | 15 | 270 | 5240 | 1535 | 620 | 8.45 | 2.48 | 39-07 | | | | | | |
| 39R141B | 8.6 | 40 | 250 | 6010 | 1760 | 565 | 10.64 | 3.12 | 39-01 | | | | | | |
| 39R141C | 8.1 | 40 | 250 | 5515 | 1615 | 530 | 10.41 | 3.05 | 39-01 | | | | | | |
| 39R151C | 9.0 | 40 | 250 | 6190 | 1815 | 600 | 10.32 | 3.03 | 39-01 | | | | | | |
| 39R161B | 9.75 | 60 | 250 | 6705 | 1965 | 665 | 10.08 | 2.95 | 39-01 | | | | | | Inmetro |
| 39R161C | 9.5 | 15 | 300 | 6510 | 1905 | 725 | 8.98 | 2.63 | 39-02 | | | | | | |
| 39R161D | 9.5 | 15 | 300 | 6470 | 1895 | 750 | 8.63 | 2.53 | 39-03 | | | | | | |
| 39R161E | 9.75 | 35 | 250 | 6825 | 2000 | 680 | 10.04 | 2.94 | 39-01 | | | | | | |
| 39R171D | 10.4 | 35 | 250 | 7105 | 2080 | 700 | 10.15 | 2.97 | 39-01 | | | | | | |
| 39R171E | 10.4 | 15 | 370 | 6985 | 2045 | 770 | 9.07 | 2.66 | 39-02 | | | | | | |
| 39R191C | 11.1 | 35 | 250 | 7580 | 2220 | 760 | 9.97 | 2.92 | 39-01 | | | | | | |
| 39R201A | 11.4 | 35 | 250 | 7815 | 2290 | 765 | 10.22 | 2.99 | 39-01 | | | | | | Inmetro |
| 39R201B | 11.4 | 35 | 250 | 7775 | 2280 | 755 | 10.30 | 3.02 | 39-01 | | | | | | |
| 44R201A | 11.4 | 60 | 250 | 7740 | 2265 | 745 | 10.39 | 3.04 | 44-02 | | | | | | |
| 44R211A | 12.4 | 60 | 250 | 8410 | 2465 | 805 | 10.45 | 3.06 | 44-02 | | | | | | |
| 44R231A | 13.2 | 60 | 250 | 8890 | 2605 | 850 | 10.46 | 3.06 | 44-02 | | | | | | Inmetro |
| 44R231B | 13.5 | 60 | 250 | 9285 | 2720 | 880 | 10.55 | 3.09 | 44-02 | | | | | | |
| 44R2D1C | 13.5 | 60 | 250 | 9325 | 2730 | 880 | 10.60 | 3.10 | 44-07 | | | | | | Inmetro |
| 44R241A | 14.4 | 60 | 250 | 9800 | 2870 | 950 | 10.32 | 3.02 | 44-02 | | | | | | |
| 44R251A | 14.7 | 60 | 250 | 10040 | 2940 | 970 | 10.35 | 3.03 | 44-02 | | | | | | Inmetro |
| 44R261A | 15.6 | 60 | 250 | 10635 | 3115 | 1025 | 10.38 | 3.04 | 44-02 | | | | | | |
| 44R281A | 16.4 | 60 | 250 | 11230 | 3290 | 1085 | 10.35 | 3.03 | 44-02 | | | | | | |
| 44R291A | 16.8 | 60 | 250 | 11545 | 3380 | 1110 | 10.40 | 3.05 | 44-02 | | | | | | Inmetro |
| 44R311A | 18.1 | 60 | 250 | 12580 | 3685 | 1200 | 10.48 | 3.07 | 44-02 | | | | | | Inmetro |
| 44R331A | 19.1 | 60 | 250 | 13215 | 3870 | 1280 | 10.32 | 3.02 | 44-02 | | | | | | |
| 48R361A | 20.2 | 55 | 250 | 14085 | 4125 | 1410 | 9.99 | 2.93 | 48-02 | | | | | | |

定速压缩机/Constant-Speed Compressor



定速压缩机/Constant-Speed Compressor



R22 1Φ 208-230V / 60Hz

Testing Condition : ASHRAE/T

| Model | Disp. c.c. | Capacitor | | Cooling Capacity | | Input Power W | EER Btu/h.W | COP W/W | Outline Drawing | Safety Recognition | | | | | | | |
|---------|------------|-----------|-----|------------------|------|---------------|-------------|---------|-----------------|--------------------|-----|-----|-----|-----|--------|--|------------|
| | | μF | VAC | Btu/h | W | | | | | C-UL | VPC | TUV | CCC | VDE | Others | | |
| 39R102A | 6.25 | 10 | 370 | 4285 | 1255 | 480 | 8.93 | 2.61 | 39-07 | | | | | | | | |
| 39R122A | 7.0 | 10 | 370 | 4800 | 1405 | 535 | 8.97 | 2.63 | 39-07 | | | | | | | | |
| 39R132A | 7.5 | 15 | 370 | 5120 | 1500 | 495 | 10.34 | 3.03 | 39-01 | | 0 | | | | | | |
| 39R132B | 7.5 | 15 | 370 | 5180 | 1515 | 495 | 10.46 | 3.06 | 39-08 | | | | | | | | KC |
| 39R142A | 8.1 | 15 | 370 | 5515 | 1615 | 530 | 10.41 | 3.05 | 39-01 | 0 | 0 | | | | | | |
| 39R162A | 9.75 | 20 | 370 | 6665 | 1950 | 655 | 10.18 | 2.98 | 39-01 | 0 | 0 | | | | | | Inmetro |
| 39R162B | 9.5 | 8 | 400 | 6585 | 1930 | 725 | 9.08 | 2.66 | 39-02 | | 0 | | | | | | |
| 39R162C | 9.75 | 20 | 370 | 6725 | 1970 | 655 | 10.27 | 3.01 | 39-01 | | | | | | | | Inmetro |
| 39R172B | 10.4 | 20 | 370 | 7105 | 2080 | 700 | 10.15 | 2.97 | 39-01 | 0 | 0 | | | | | | KC,Inmetro |
| 39R192A | 11.1 | 25 | 370 | 7660 | 2245 | 760 | 10.08 | 2.95 | 39-01 | | 0 | | | | | | |
| 39R202A | 11.4 | 25 | 370 | 7855 | 2300 | 760 | 10.34 | 3.03 | 39-01 | 0 | 0 | | | | | | KC,Inmetro |
| 44R202A | 11.4 | 30 | 370 | 7775 | 2280 | 745 | 10.44 | 3.06 | 44-02 | 0 | 0 | | | | | | |
| 44R212A | 12.4 | 30 | 370 | 8450 | 2475 | 805 | 10.50 | 3.07 | 44-02 | 0 | 0 | | | | | | |
| 44R232A | 13.2 | 25 | 370 | 8930 | 2615 | 840 | 10.63 | 3.11 | 44-02 | 0 | 0 | | | | | | KC,Inmetro |
| 44R232B | 13.2 | 25 | 370 | 9165 | 2685 | 850 | 10.78 | 3.16 | 44-02 | | | | | | | | Inmetro |
| 44R232C | 13.2 | 30 | 370 | 9145 | 2680 | 865 | 10.57 | 3.10 | 44-07 | | | | | | | | |
| 44R2D2C | 13.5 | 30 | 370 | 9345 | 2735 | 880 | 10.62 | 3.11 | 44-07 | | | | | | | | Inmetro |
| 44R252A | 14.7 | 30 | 370 | 10120 | 2965 | 960 | 10.54 | 3.09 | 44-02 | 0 | 0 | | | | | | Inmetro |
| 44R262A | 15.6 | 30 | 370 | 10635 | 3115 | 1005 | 10.58 | 3.10 | 44-02 | 0 | 0 | | | | | | |
| 44R282A | 16.4 | 30 | 370 | 11270 | 3300 | 1065 | 10.58 | 3.10 | 44-02 | 0 | 0 | | | | | | |
| 44R292A | 16.8 | 30 | 370 | 11585 | 3395 | 1095 | 10.58 | 3.10 | 44-02 | 0 | 0 | | | | | | Inmetro |
| 44R312A | 18.1 | 30 | 370 | 12540 | 3670 | 1185 | 10.58 | 3.10 | 44-02 | 0 | 0 | | | | | | Inmetro |
| 44R312B | 18.1 | 30 | 370 | 12660 | 3705 | 1190 | 10.64 | 3.11 | 44-02 | | | | | | | | |
| 44R332A | 19.1 | 30 | 370 | 13330 | 3905 | 1260 | 10.58 | 3.10 | 44-02 | 0 | 0 | | | | | | |
| 48R342C | 19.2 | 35 | 370 | 13690 | 4010 | 1290 | 10.61 | 3.11 | 48-02 | | 0 | | | | | | |
| 48R362A | 20.2 | 35 | 370 | 14225 | 4165 | 1365 | 10.42 | 3.05 | 48-02 | 0 | 0 | | | | | | |
| 48R372A | 20.8 | 40 | 370 | 14565 | 4265 | 1410 | 10.33 | 3.02 | 48-02 | 0 | 0 | | | | | | |
| 48R382B | 21.4 | 40 | 370 | 15355 | 4495 | 1450 | 10.59 | 3.10 | 48-02 | 0 | 0 | | | | | | |
| 48R422A | 23.5 | 40 | 370 | 16430 | 4810 | 1560 | 10.53 | 3.08 | 48-02 | 0 | 0 | | | | | | |
| 48R442A | 25.0 | 40 | 370 | 17560 | 5140 | 1660 | 10.58 | 3.10 | 48-02 | 0 | 0 | | | | | | Inmetro |
| 48R462B | 25.8 | 35 | 370 | 18450 | 5405 | 1770 | 10.42 | 3.05 | 48-02 | 0 | 0 | | | | | | |
| 48R462W | 25.8 | 40 | 370 | 18215 | 5335 | 1715 | 10.62 | 3.11 | 48-03 | | | | | | | | KC |
| 48R492A | 27.1 | 40 | 370 | 19365 | 5670 | 1880 | 10.30 | 3.02 | 48-02 | 0 | 0 | | | | | | Inmetro |
| 48R502A | 28.0 | 40 | 370 | 19720 | 5775 | 1930 | 10.22 | 2.99 | 48-02 | 0 | 0 | | | | | | |
| 48R562A | 32.5 | 40 | 370 | 22775 | 6670 | 2270 | 10.03 | 2.94 | 48-07 | | 0 | | | | | | |
| 48R612A | 34.0 | 40 | 370 | 24205 | 7090 | 2420 | 10.00 | 2.93 | 48-07 | 0 | 0 | | | | | | Inmetro |
| 50R492P | 27.1 | 45 | 370 | 19085 | 5590 | 1810 | 10.54 | 3.09 | 50-08 | 0 | 0 | | | | | | |
| 50R492V | 27.1 | 45 | 370 | 19085 | 5590 | 1810 | 10.54 | 3.09 | 50-08 | | | | | | | | |
| 50R502P | 28.0 | 45 | 370 | 19600 | 5740 | 1870 | 10.48 | 3.07 | 50-08 | 0 | 0 | | | | | | |
| 50R552V | 31.6 | 50 | 370 | 22140 | 6485 | 2100 | 10.54 | 3.09 | 50-08 | 0 | 0 | | | | | | CB |
| 50R572P | 32.5 | 50 | 370 | 22775 | 6670 | 2220 | 10.26 | 3.00 | 50-08 | | | | | | | | |
| 50R572V | 32.5 | 50 | 370 | 22775 | 6670 | 2220 | 10.26 | 3.00 | 50-08 | 0 | 0 | | | | | | |
| 50R642V | 35.6 | 45 | 400 | 25395 | 7435 | 2450 | 10.37 | 3.03 | 50-08 | | | | | | | | |
| 55R762G | 41.6 | 50 | 400 | 30435 | 8915 | 2890 | 10.53 | 3.08 | 55-01 | | | | | | | | Inmetro |

R22 1Φ 220-240V / 50Hz

Testing Condition : ASHRAE/T

| Model | Disp. c.c. | Capacitor | | Cooling Capacity | | Input Power W | EER Btu/h.W | COP W/W | Outline Drawing | Safety Recognition | | | | | | | |
|---------|------------|-----------|-----|------------------|------|---------------|-------------|---------|-----------------|--------------------|-----|-----|-----|-----|--------|--|----|
| | | μF | VAC | Btu/h | W | | | | | C-UL | VPC | TUV | CCC | VDE | Others | | |
| 39R123B | 8.1 | 20 | 370 | 4485 | 1315 | 445 | 10.08 | 2.96 | 39-01 | | | 0 | 0 | | | | |
| 39R143C | 10.4 | 20 | 370 | 5835 | 1710 | 590 | 9.89 | 2.90 | 39-01 | | | 0 | 0 | | | | |
| 39R163B | 11.1 | 20 | 370 | 6310 | 1850 | 630 | 10.02 | 2.94 | 39-01 | | | 0 | 0 | | | | |
| 39R173A | 11.4 | 25 | 370 | 6470 | 1895 | 650 | 9.95 | 2.92 | 39-01 | | | | 0 | | | | |
| 44R173A | 12.4 | 40 | 370 | 6905 | 2020 | 665 | 10.38 | 3.04 | 44-02 | | | 0 | | | | | |
| 44R173B | 12.4 | 25 | 370 | 6825 | 2000 | 670 | 10.19 | 2.99 | 44-02 | | | 0 | | | | | |
| 44R193A | 13.2 | 40 | 370 | 7340 | 2150 | 700 | 10.49 | 3.07 | 44-02 | | | 0 | 0 | | | | |
| 44R193B | 13.2 | 25 | 370 | 7260 | 2125 | 705 | 10.30 | 3.01 | 44-02 | | | 0 | | | | | |
| 44R203A | 14.7 | 40 | 370 | 8175 | 2395 | 780 | 10.48 | 3.07 | 44-02 | | | 0 | 0 | | | | |
| 44R203B | 14.7 | 25 | 370 | 8135 | 2380 | 805 | 10.11 | 2.96 | 44-02 | | | | | | | | |
| 44R213A | 15.6 | 40 | 370 | 8730 | 2555 | 835 | 10.46 | 3.06 | 44-02 | | | 0 | | | | | |
| 44R213B | 15.6 | 25 | 370 | 8690 | 2545 | 860 | 10.10 | 2.96 | 44-02 | | | 0 | 0 | | | | |
| 44R213C | 15.6 | 25 | 370 | 8690 | 2545 | 840 | 10.35 | 3.03 | 44-02 | | | 0 | 0 | | | | |
| 44R233A | 16.4 | 40 | 370 | 9125 | 2675 | 880 | 10.37 | 3.04 | 44-02 | | | 0 | | | | | |
| 44R233B | 16.4 | 25 | 370 | 9085 | 2660 | 895 | 10.15 | 2.97 | 44-02 | | | 0 | 0 | | | | |
| 44R233C | 16.4 | 25 | 370 | 9125 | 2675 | 880 | 10.37 | 3.04 | 44-04 | | | 0 | 0 | | | | |
| 44R233J | 16.4 | 25 | 370 | 9125 | 2675 | 880 | 10.37 | 3.04 | 44-04 | | | 0 | 0 | | | | |
| 44R243B | 16.8 | 25 | 370 | 9405 | 2755 | 930 | 10.11 | 2.96 | 44-02 | | | 0 | 0 | | | | |
| 44R243C | 16.8 | 25 | 370 | 9365 | 2740 | 905 | 10.35 | 3.03 | 44-02 | | | 0 | 0 | | | | |
| 44R243J | 16.8 | 25 | 370 | 9365 | 2740 | 905 | 10.35 | 3.03 | 44-04 | | | 0 | 0 | | | | |
| 44R253A | 18.1 | 35 | 370 | 10160 | 2975 | 980 | 10.37 | 3.04 | 44-02 | | | 0 | 0 | | | | |
| 44R253B | 17.5 | 25 | 370 | 9840 | 2880 | 990 | 9.94 | 2.91 | 44-02 | | | 0 | 0 | | | | |
| 44R253C | 17.5 | 35 | 370 | 9840 | 2880 | 960 | 10.25 | 3.00 | 44-02 | | | 0 | 0 | | | | |
| 44R253J | 17.5 | 35 | 370 | 9840 | 2880 | 960 | 10.25 | 3.00 | 44-04 | | | 0 | 0 | | | | |
| 44R273A | 19.1 | 35 | 370 | 10715 | 3135 | 1055 | 10.16 | 2.97 | 44-02 | | | 0 | 0 | | | | |
| 48R293N | 20.2 | 30 | 370 | 11705 | 3430 | 1125 | 10.40 | 3.05 | 48-03 | | | 0 | | | | | |
| 48R313A | 21.4 | 30 | 370 | 12500 | 3660 | 1230 | 10.16 | 2.98 | 48-02 | | | 0 | 0 | | | | CB |
| 48R313N | 21.4 | 30 | 370 | 12540 | 3670 | 1230 | 10.20 | 2.98 | 48-03 | | | 0 | 0 | | | | |
| 48R313P | 21.4 | 30 | 420 | 12540 | 3670 | 1180 | 10.63 | 3.11 | 48-03 | | | 0 | 0 | | | | |
| 48R313U | 21.4 | 30 | 370 | 12540 | 3670 | 1230 | 10.20 | 2.98 | 48-03 | | | 0 | 0 | | | | |
| 48R313V | 21.4 | 30 | 370 | 12540 | 3670 | 1180 | 10.63 | 3.11 | 48-03 | | | 0 | 0 | | | | |
| 48R323A | 22.2 | 25 | 370 | 12815 | 3755 | 1250 | 10.25 | 3.00 | 48-02 | | | 0 | 0 | | | | CB |
| 48R323N | 22.2 | 30 | 370 | 12895 | 3775 | 1250 | 10.32 | 3.02 | 48-03 | | | 0 | 0 | | | | |
| 48R323P | 22.2 | 30 | 420 | 13015 | 3810 | 1230 | 10.58 | 3.10 | 48-03 | | | 0 | 0 | | | | |
| 48R323U | 22.2 | 30 | 370 | 12895 | 3775 | 1250 | 10.32 | 3.02 | 48-03 | | | 0 | 0 | | | | |
| 48R323V | 22.2 | 30 | 370 | 13015 | 3810 | 1230 | 10.58 | 3.10 | 48-03 | | | 0 | 0 | | | | |
| 48R343A | 23.5 | 30 | 370 | 13690 | 4010 | 1320 | 10.37 | 3.04 | 48-02 | | | 0 | 0 | | | | CB |
| 48R343N | 23.5 | 30 | 370 | 13750 | 4025 | 1330 | 10.34 | 3.03 | 48-03 | | | 0 | 0 | | | | |
| 48R343P | 23.5 | 30 | 420 | 13750 | 4025 | 1300 | 10.58 | 3.10 | 48-03 | | | 0 | 0 | | | | |
| 48R343U | 23.5 | 30 | 370 | 13750 | 4025 | 1330 | 10.34 | 3.03 | 48-03 | | | 0 | 0 | | | | |
| 48R343V | 23.5 | 30 | 370 | 13750 | 4025 | 1300 | 10.58 | 3.10 | 48-03 | | | 0 | 0 | | | | |
| 48R363N | 25.0 | 30 | 370 | 14565 | 4265 | 1415 | 10.29 | 3.0 | | | | | | | | | |

定速压缩机/Constant-Speed Compressor



R22 1Φ 220-240V / 50Hz Testing Condition : ASHRAE/T

| Model | Disp. c.c. | Capacitor μF VAC | Cooling Capacity | | Input Power W | EER Btu/h.W | COP W/W | Outline Drawing | Safety Recognition | | | | | | |
|---------|---------------|---------------------|------------------|------|------------------|----------------|------------|-----------------|--------------------|-----|-----|-----|-----|--------|-----|
| | | | Btu/h | W | | | | | C-UL | VPC | TUV | CCC | VDE | Others | |
| 48R403A | 27.1 | 30 370 | 15830 | 4635 | 1585 | 9.99 | 2.92 | 48-02 | | | ○ | | | | CB |
| 48R413A | 28.0 | 30 370 | 16350 | 4785 | 1645 | 9.94 | 2.91 | 48-02 | | | ○ | ○ | | | CB |
| 48R433A | 29.2 | 30 370 | 16945 | 4960 | 1660 | 10.21 | 2.99 | 48-07 | | | | | | | CB |
| 48R433N | 29.2 | 30 370 | 16945 | 4960 | 1660 | 10.21 | 2.99 | 48-08 | | | | | | | |
| 48R433U | 29.2 | 30 370 | 16945 | 4960 | 1660 | 10.21 | 2.99 | 48-08 | | | | | | | |
| 48R453A | 30.6 | 35 370 | 17735 | 5195 | 1800 | 9.85 | 2.89 | 48-07 | | | ○ | | | | CB |
| 48R453N | 30.6 | 35 370 | 17735 | 5195 | 1800 | 9.85 | 2.89 | 48-08 | | | | | | | |
| 48R453U | 30.6 | 35 370 | 17735 | 5195 | 1800 | 9.85 | 2.89 | 48-08 | | | | | | | |
| 48R473A | 32.5 | 35 370 | 18850 | 5520 | 1900 | 9.92 | 2.91 | 48-07 | | | ○ | ○ | | | CB |
| 48R473N | 32.5 | 35 370 | 18850 | 5520 | 1900 | 9.92 | 2.91 | 48-08 | | | ○ | ○ | | | |
| 48R473V | 32.5 | 35 370 | 18650 | 5460 | 1820 | 10.25 | 3.00 | 48-08 | | | ○ | | | | |
| 48R483V | 33.3 | 35 370 | 19045 | 5580 | 1875 | 10.16 | 2.98 | 48-08 | | | | | | | |
| 48R493G | 34.0 | 35 370 | 19680 | 5765 | 2000 | 9.84 | 2.88 | 48-07 | | | | | | | |
| 50R433V | 29.2 | 35 400 | 16665 | 4880 | 1570 | 10.61 | 3.11 | 50-08 | | | | | | | TIS |
| 50R453V | 30.6 | 35 370 | 17540 | 5135 | 1680 | 10.44 | 3.06 | 50-08 | | | ○ | ○ | | | |
| 50R453Y | 30.6 | 35 370 | 17695 | 5185 | 1650 | 10.72 | 3.14 | 50-08 | | | | | | | |
| 50R473V | 32.5 | 35 370 | 18690 | 5475 | 1810 | 10.33 | 3.02 | 50-08 | | | ○ | ○ | | | |
| 50R493V | 34.0 | 40 400 | 19485 | 5705 | 1920 | 10.15 | 2.97 | 50-08 | | | ○ | ○ | | | |
| 50R503V | 34.7 | 45 400 | 19920 | 5835 | 1960 | 10.16 | 2.98 | 50-08 | | | ○ | ○ | | | |
| 55R573G | 39.0 | 40 400 | 22220 | 6505 | 2140 | 10.38 | 3.04 | 55-03 | | | | | | | |
| 55R613G | 41.6 | 40 450 | 24205 | 7090 | 2330 | 10.39 | 3.04 | 55-01 | | | ○ | ○ | | | |
| 55R613H | 41.6 | 40 450 | 24205 | 7090 | 2330 | 10.39 | 3.04 | 55-02 | | | ○ | | | | |
| 55R653G | 44.2 | 45 450 | 25595 | 7495 | 2470 | 10.36 | 3.03 | 55-01 | | | ○ | | | | |
| 55R683G | 46.5 | 45 450 | 26745 | 7830 | 2590 | 10.33 | 3.02 | 55-01 | | | | | | | |
| 55R683U | 46.5 | 45 450 | 26745 | 7830 | 2590 | 10.33 | 3.02 | 55-03 | | | | | | | |
| 55R713G | 48.6 | 50 450 | 28175 | 8250 | 2730 | 10.32 | 3.02 | 55-01 | | | | ○ | | | |
| 55R713U | 48.6 | 50 450 | 28175 | 8250 | 2730 | 10.32 | 3.02 | 55-03 | | | | | | | |

R22 1Φ 200-220V / 50Hz Testing Condition : ASHRAE/T

| Model | Disp. c.c. | Capacitor μF VAC | Cooling Capacity | | Input Power W | EER Btu/h.W | COP W/W | Outline Drawing | Safety Recognition | | | | | | |
|---------|---------------|---------------------|------------------|------|------------------|----------------|------------|-----------------|--------------------|-----|-----|-----|-----|--------|-----|
| | | | Btu/h | W | | | | | C-UL | VPC | TUV | CCC | VDE | Others | |
| 39R094A | 6.25 | 20 370 | 3490 | 1025 | 365 | 9.56 | 2.81 | 39-06 | | | | | | | |
| 39R114A | 7.5 | 15 370 | 4285 | 1255 | 415 | 10.33 | 3.02 | 39-06 | | | ○ | | | | |
| 39R1C4C | 8.6 | 20 370 | 4840 | 1420 | 520 | 9.31 | 2.73 | 39-08 | | | | | | | |
| 39R164A | 11.1 | 25 370 | 6230 | 1825 | 625 | 9.97 | 2.92 | 39-01 | | | | | | | |
| 44R194A | 13.2 | 25 370 | 7460 | 2185 | 730 | 10.22 | 2.99 | 44-02 | | | | | | | |
| 44R204A | 14.7 | 35 370 | 8410 | 2465 | 785 | 10.71 | 3.14 | 44-02 | | | | | | | TIS |
| 44R214A | 15.6 | 25 370 | 8690 | 2545 | 840 | 10.35 | 3.03 | 44-02 | | | | | | | |
| 44R214D | 15.6 | 25 370 | 8830 | 2585 | 900 | 9.81 | 2.87 | 44-01 | | | | | | | |
| 44R234G | 16.4 | 35 370 | 9085 | 2660 | 895 | 10.15 | 2.97 | 44-02 | | | | | | | |
| 48R274P | 19.2 | 30 370 | 11190 | 3275 | 1050 | 10.66 | 3.12 | 48-03 | | | | ○ | | | |
| 50R454U | 30.6 | 40 370 | 17775 | 5205 | 1780 | 9.99 | 2.92 | 50-08 | | | | | | | |

定速压缩机/Constant-Speed Compressor

R22 1Φ 100/100-110V 50/60Hz Testing Condition : ASHRAE/T

| Model | Disp. c.c. | Capacitor μF VAC | Cooling Capacity | | Input Power W | EER Btu/h.W | COP W/W | Outline Drawing | Safety Recognition | | | | | | |
|---------|---------------|---------------------|------------------|------|------------------|----------------|------------|-----------------|--------------------|-----|-----|-----|-----|--------|--|
| | | | Btu/h | W | | | | | C-UL | VPC | TUV | CCC | VDE | Others | |
| 39R165B | 9.5 | 80 200 | 5355 | 1570 | 540 | 9.92 | 2.91 | 39-01 | | | | | | | |
| | | | 6430 | 1880 | 635 | 10.13 | 2.96 | | | | | | | | |
| 39R165C | 9.5 | 25 250 | 5275 | 1545 | 605 | 8.72 | 2.55 | 39-02 | | | | | | | |
| | | | 6430 | 1880 | 710 | 9.06 | 2.65 | | | | | | | | |
| 39R175C | 10.4 | 40 250 | 5835 | 1710 | 600 | 9.73 | 2.85 | 39-01 | | | | | | | |
| | | | 7025 | 2055 | 720 | 9.76 | 2.85 | | | | | | | | |
| 39R175D | 10.4 | 60 250 | 5910 | 1730 | 625 | 9.46 | 2.77 | 39-01 | | | | | | | |
| | | | 7105 | 2080 | 705 | 10.08 | 2.95 | | | | | | | | |

R22 1Φ 265V / 60Hz Testing Condition : ASHRAE/T

| Model | Disp. c.c. | Capacitor μF VAC | Cooling Capacity | | Input Power W | EER Btu/h.W | COP W/W | Outline Drawing | Safety Recognition | | | | | | |
|---------|---------------|---------------------|------------------|------|------------------|----------------|------------|-----------------|--------------------|-----|-----|-----|-----|--------|--|
| | | | Btu/h | W | | | | | C-UL | VPC | TUV | CCC | VDE | Others | |
| 44R217A | 12.4 | 25 370 | 8390 | 2460 | 805 | 10.42 | 3.06 | 44-02 | | | | | | | |
| 44R287A | 16.4 | 30 370 | 11470 | 3360 | 1100 | 10.43 | 3.05 | 44-02 | | | | | | | |

S 典型应用：中国高效空调机
Typical Application: China Hi-EER Air-Conditioner

R22 1Φ 220-240V / 50Hz Testing Condition : ASHRAE/T MAT

| Model | Disp. c.c. | Capacitor μF VAC | Cooling Capacity | | Input Power W | EER Btu/h.W | COP W/W | Outline Drawing | Safety Recognition | | | | | | |
|---------|---------------|---------------------|------------------|------|------------------|----------------|------------|-----------------|--------------------|-----|-----|-----|-----|--------|-----|
| | | | Btu/h | W | | | | | C-UL | VPC | TUV | CCC | VDE | Others | |
| 44S183A | 13.2 | 35 370 | 7620 | 2230 | 710 | 10.73 | 3.14 | 44-02 | | | | ○ | | | |
| | | | 9565 | 2800 | 580 | 16.49 | 4.83 | | | | | | | | |
| 44S193A | 14.0 | 35 370 | 7955 | 2330 | 750 | 10.61 | 3.11 | 44-02 | | | | ○ | | | |
| | | | 10100 | 2955 | 610 | 16.56 | 4.84 | | | | | | | | |
| 44S203A | 14.7 | 35 370 | 8335 | 2440 | 785 | 10.62 | 3.11 | 44-02 | | | | ○ | | | TIS |
| | | | 10595 | 3105 | 640 | 16.55 | 4.85 | | | | | | | | |
| 44S213A | 15.6 | 35 370 | 8810 | 2580 | 835 | 10.55 | 3.09 | 44-02 | | | | ○ | | | |
| | | | 11150 | 3265 | 675 | 16.52 | 4.84 | | | | | | | | |
| 44S213G | 15.6 | 35 370 | 8810 | 2580 | 835 | 10.55 | 3.09 | 44-02 | | | | ○ | | | |
| | | | 11150 | 3265 | 675 | 16.52 | 4.84 | | | | | | | | |
| 48S273V | 19.2 | 30 370 | 11070 | 3240 | 995 | 11.13 | 3.26 | 48-03 | | | | ○ | | | |
| | | | 14085 | 4125 | 825 | 17.07 | 5.00 | | | | | | | | |
| 48S283V | 19.7 | 30 370 | 11350 | 3325 | 1020 | 11.13 | 3.26 | 48-03 | | | | ○ | | | |
| | | | 14445 | 4230 | 845 | 17.09 | 5.01 | | | | | | | | |
| 50S273W | 19.2 | 30 370 | 11270 | 3300 | 1020 | 11.05 | 3.24 | 50-03 | | | | | | | |
| | | | 14365 | 4205 | 845 | 17.00 | 4.98 | | | | | | | | |
| 50S293W | 20.2 | 30 370 | 11825 | 3465 | 1060 | 11.16 | 3.27 | 50-03 | | | | ○ | | | |
| | | | 15040 | 4405 | 875 | 17.19 | 5.03 | | | | | | | | |
| 50S303W | 20.8 | 30 370 | 12180 | 3565 | 1090 | 11.17 | 3.27 | 50-03 | | | | ○ | | | TIS |
| | | | 15395 | 4510 | 895 | 17.20 | 5.04 | | | | | | | | |
| 50S313W | 21.4 | 30 370 | 12420 | 3635 | 1115 | 11.14 | 3.26 | 50-03 | | | | ○ | | | |
| | | | 15755 | 4615 | 920 | 17.13 | 5.02 | | | | | | | | |

定速压缩机/Constant-Speed Compressor



R22 1Φ 220-240V / 50Hz

Testing Condition : ASHRAE/T MAT

| Model | Disp. c.c. | Capacitor μF VAC | Cooling Capacity | | Input Power W | EER Btu/h.W | COP W/W | Outline Drawing | Safety Recognition | | | | | | |
|---------|------------|------------------|------------------|-------|---------------|-------------|---------|-----------------|--------------------|-----|-----|-----|-----|--------|--|
| | | | Btu/h | W | | | | | C-UL | VPC | TUV | CCC | VDE | Others | |
| 50S433Y | 29.2 | 35 | 400 | 16825 | 4925 | 1570 | 10.72 | 3.14 | 50-08 | | | | | | |
| | | | | 21530 | 6305 | 1260 | 17.09 | 5.00 | | | | | | | |
| 50S443Y | 29.9 | 35 | 400 | 17230 | 5045 | 1610 | 10.70 | 3.13 | 50-08 | | | | | | |
| | | | | 22045 | 6455 | 1290 | 17.09 | 5.00 | | | | | | | |
| 50S453Y | 30.6 | 40 | 370 | 17540 | 5135 | 1640 | 10.70 | 3.13 | 50-08 | | | | | | |
| | | | | 22420 | 6565 | 1320 | 16.98 | 4.97 | | | | | | | |

T 典型应用: 热带(T3)空调机
Typical Application: Tropical (T3) Air-Conditioner

R22 1Φ 208-230V / 60Hz

Testing Condition : ASHRAE/T

| Model | Disp. c.c. | Capacitor μF VAC | Cooling Capacity | | Input Power W | EER Btu/h.W | COP W/W | Outline Drawing | Safety Recognition | | | | | | |
|---------|------------|------------------|------------------|-------|---------------|-------------|---------|-----------------|--------------------|-----|-----|-----|-----|--------|--|
| | | | Btu/h | W | | | | | C-UL | VPC | TUV | CCC | VDE | Others | |
| 48T502A | 28.0 | 40 | 370 | 19680 | 5765 | 1980 | 9.94 | 2.91 | 48-07 | | | | | | |
| 48T502G | 28.0 | 40 | 370 | 19680 | 5765 | 1980 | 9.94 | 2.91 | 48-07 | | | | | | |
| 50T502U | 28.0 | 50 | 370 | 19720 | 5775 | 1930 | 10.22 | 2.99 | 50-08 | | | | | | |
| 50T512Y | 28.6 | 50 | 370 | 20235 | 5925 | 1900 | 10.65 | 3.12 | 50-08 | | | | | | |
| 55T532G | 35.6 | 35 | 450 | 20475 | 5995 | 1950 | 10.50 | 3.07 | 55-01 | | | | | | |
| 55T682G | 37.6 | 55 | 400 | 27180 | 7960 | 2700 | 10.07 | 2.95 | 55-01 | | | | | | |

R22 1Φ 220-240V / 50Hz

Testing Condition : ASHRAE/T

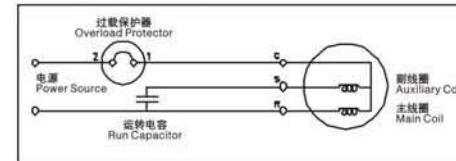
| Model | Disp. c.c. | Capacitor μF VAC | Cooling Capacity | | Input Power W | EER Btu/h.W | COP W/W | Outline Drawing | Safety Recognition | | | | | | |
|---------|------------|------------------|------------------|-------|---------------|-------------|---------|-----------------|--------------------|-----|-----|-----|-----|--------|--|
| | | | Btu/h | W | | | | | C-UL | VPC | TUV | CCC | VDE | Others | |
| 44T233G | 16.4 | 35 | 370 | 9425 | 2760 | 895 | 10.53 | 3.08 | 44-04 | | | | | | |
| 48T313G | 21.4 | 30 | 370 | 12540 | 3670 | 1230 | 10.20 | 2.98 | 48-02 | | | | | | |
| 48T313N | 21.4 | 30 | 370 | 12540 | 3670 | 1230 | 10.20 | 2.98 | 48-03 | | | | | | |
| 48T313U | 21.4 | 30 | 370 | 12540 | 3670 | 1230 | 10.20 | 2.98 | 48-03 | | | | | | |
| 48T323A | 22.2 | 30 | 370 | 12815 | 3755 | 1250 | 10.25 | 3.00 | 48-02 | | | | | | |
| 48T323G | 22.2 | 30 | 370 | 12815 | 3755 | 1250 | 10.25 | 3.00 | 48-02 | | | | | | |
| 48T323N | 22.2 | 30 | 370 | 12895 | 3775 | 1260 | 10.23 | 3.00 | 48-03 | | | | | | |
| 48T473U | 32.5 | 40 | 370 | 18570 | 5440 | 1930 | 9.62 | 2.82 | 48-08 | | | | | | |
| 50T453U | 30.6 | 40 | 370 | 17935 | 5250 | 1790 | 10.02 | 2.93 | 50-08 | | | | | | |
| 50T473U | 32.5 | 40 | 370 | 18850 | 5520 | 1900 | 9.92 | 2.91 | 50-08 | | | | | | |
| 50T493U | 34.0 | 50 | 370 | 19800 | 5800 | 1960 | 10.10 | 2.96 | 50-08 | | | | | | |
| 50T503U | 34.7 | 50 | 370 | 20040 | 5870 | 1990 | 10.07 | 2.95 | 50-08 | | | | | | |
| 55T613G | 41.6 | 45 | 450 | 24205 | 7090 | 2315 | 10.46 | 3.06 | 55-01 | | | | | | |
| 55T653G | 44.2 | 45 | 450 | 25595 | 7495 | 2470 | 10.36 | 3.03 | 55-01 | | | | | | |
| 55T683G | 46.5 | 55 | 450 | 26745 | 7830 | 2590 | 10.33 | 3.02 | 55-01 | | | | | | |
| 55T683U | 46.5 | 55 | 450 | 26745 | 7830 | 2590 | 10.33 | 3.02 | 55-03 | | | | | | |

工作/测试工况 Working / Testing Condition

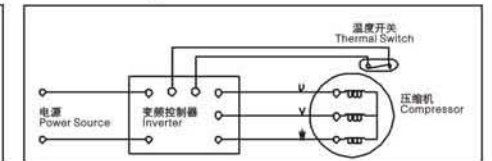
| | 冷凝温度 °C Condensing temp | 蒸发温度 °C Evaporating temp | 膨胀阀前温度 °C Liquid temp | 吸入温度 °C Suction temp | 环境温度 °C Ambient temp |
|----------|----------------------------|-----------------------------|--------------------------|-------------------------|-------------------------|
| ASHRAE/T | 54.4 | 7.2 | 46.1 | 35 | 35 |
| MAT | 45 | 12 | 40 | 24 | 35 |
| CHEER | 37.8 | 7.2 | 29.5 | 18.3 | 35 |
| HPD | 70 | 25 | 61 | 35 | 35 |
| HPWH | 65 | 10 | 55 | 20 | 35 |

接线图 Wiring Diagram

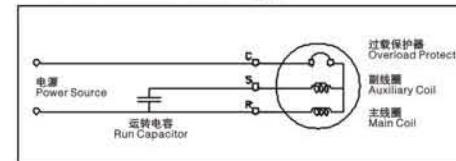
PCS Type (General)



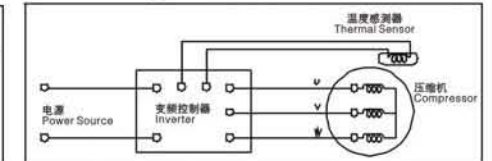
DC Inverter Type 1



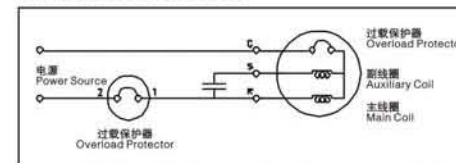
Int. Overload Protector Type



DC Inverter Type 2

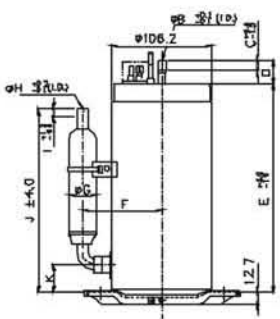
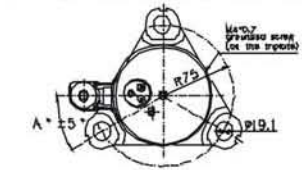


Dual Overload Protector

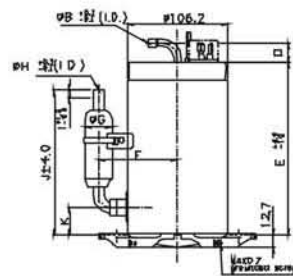
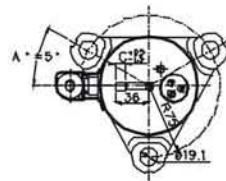


外观图/Outline Drawing

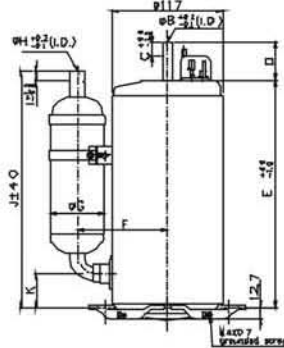
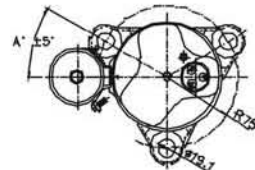
39-01,02,03,04,06,07,08,09,10,26



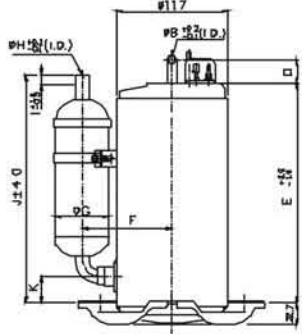
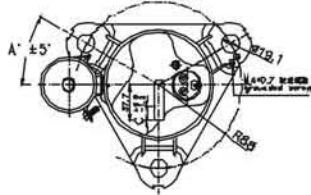
39-01,03,06,07,08(b)



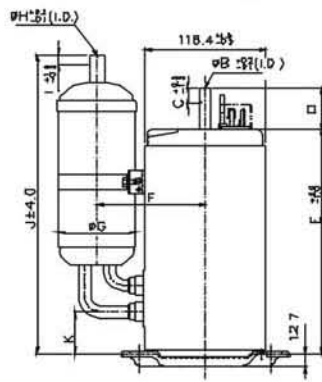
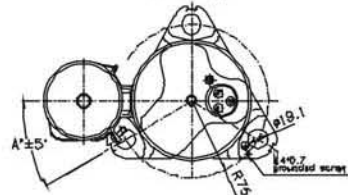
44-01,02,04,05,06,07,09,10



44-02(b)

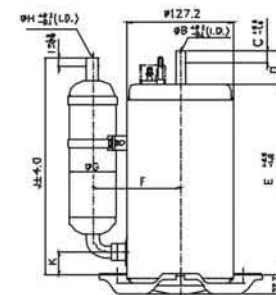
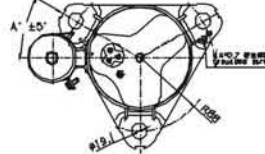


44-02(c)

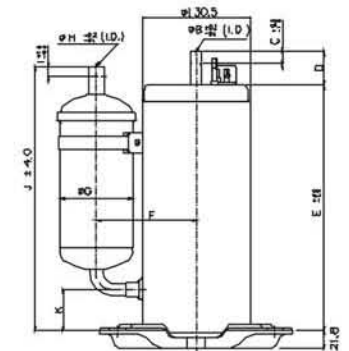
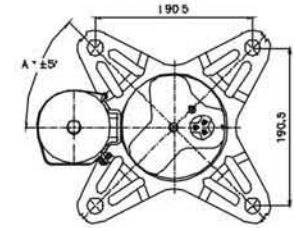


外观图/Outline Drawing

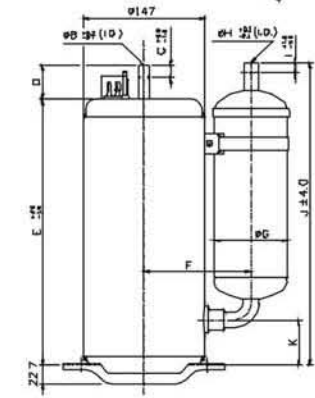
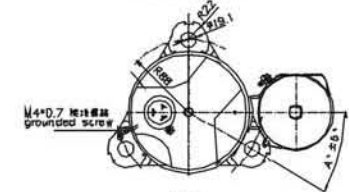
48-01,02,03,07,08



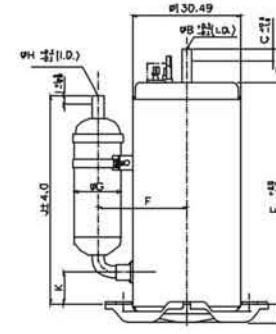
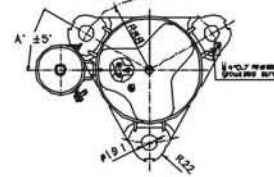
50-02(b)



55-01,02,04



50-03,04,08





外观图尺寸/Dimensions Table for Outline Drawing

| Fig.No | A | B | C | D | E | F | G | H | I | J | K |
|----------|--------|---------|-----------|---------|-------|-------|---------|------|----|-----------------|------|
| 39-01 | ±30/60 | 6.5/8.1 | 10.5/14.5 | 24.3 | 220.3 | 84 | 28.6 | 9.7 | 8 | 193.5 | 29.5 |
| 39-01 | ±30/60 | 6.5/8.1 | 10.5/14.5 | 40 | 220.3 | 87 | 40 | 9.7 | 8 | 193.5 | 29.5 |
| 39-01(b) | ±30/60 | 6.5 | 10.5 | 21 | 220.3 | 84 | 28.6 | 9.7 | 8 | 193.5 | 29.5 |
| 39-02 | ±30/60 | 8.1 | 14.5 | 40 | 192.9 | 84 | 28.6 | 9.7 | 8 | 153.5 | 29.5 |
| 39-03 | ±30/60 | 6.5 | 10.5 | 24.3 | 182.9 | 84 | 28.6 | 9.7 | 8 | 153.5 | 29.5 |
| 39-03(b) | ±30/60 | 6.5 | 10.5 | 21 | 182.9 | 84 | 28.6 | 9.7 | 8 | 153.5 | 29.5 |
| 39-04 | ±30/60 | 8.1 | 14.5 | 24.3 | 202.9 | 84 | 28.6 | 9.7 | 8 | 153.5 | 29.5 |
| 39-06 | ±30/60 | 6.5/8.1 | 10.5/14.5 | 24.3 | 220.3 | 84 | 28.6 | 9.7 | 8 | 191 | 27 |
| 39-06 | ±30/60 | 6.5/8.1 | 10.5/14.5 | 24.3 | 220.3 | 87 | 40 | 9.7 | 8 | 191 | 27 |
| 39-06 | ±30/60 | 6.5 | 10.5 | 24.3 | 220.3 | 90 | 57 | 9.7 | 8 | 242.5 | 27 |
| 39-06 | ±30/60 | 6.5 | 10.5 | 24.3 | 220.3 | 90 | 57 | 9.7 | 8 | 297 | 27 |
| 39-06(b) | ±30/60 | 6.5 | 10.5 | 21 | 220.3 | 84/87 | 28.6/40 | 9.7 | 8 | 191 | 27 |
| 39-07 | ±30/60 | 6.5 | 10.5 | 24.3 | 174.9 | 84 | 28.6 | 9.7 | 8 | 191 | 27 |
| 39-07 | ±30/60 | 6.5 | 10.5 | 24.3 | 174.9 | 84 | 28.6 | 9.7 | 8 | 151 | 27 |
| 39-07 | ±30/60 | 6.5 | 10.5 | 24.3 | 174.9 | 87 | 40 | 9.7 | 8 | 191 | 27 |
| 39-07(b) | ±30/60 | 6.5 | 10.5 | 21 | 174.9 | 84 | 28.6 | 9.7 | 8 | 151 | 27 |
| 39-08 | ±30/60 | 6.5 | 10.5 | 24.3 | 198.9 | 84 | 28.6 | 9.7 | 8 | 151 | 27 |
| 39-08 | ±30/60 | 6.5 | 10.5 | 24.3 | 198.9 | 84 | 28.6 | 9.7 | 8 | 191 | 27 |
| 39-08(b) | ±30/60 | 6.5 | 10.5 | 21 | 198.9 | 84 | 28.6 | 9.7 | 8 | 191 | 27 |
| 39-09 | ±30/60 | 6.5 | 10.5 | 24.3/40 | 209.9 | 84 | 28.6 | 9.7 | 8 | 191 | 27 |
| 39-09 | ±30/60 | 6.5 | 10.5 | 24.3/40 | 209.9 | 87 | 40 | 9.7 | 8 | 191 | 27 |
| 39-10 | ±30/60 | 8.1 | 14.5 | 24.3/40 | 240.3 | 90 | 57.3 | 12.8 | 10 | 312 | 42 |
| 39-10 | ±30/60 | 8.1 | 14.5 | 24.3/40 | 240.3 | 99.8 | 75 | 12.8 | 8 | 264 | 42 |
| 39-26 | ±30/60 | 6.5/8.1 | 10.5/14.5 | 24.3 | 182.9 | 84 | 28.6 | 9.7 | 8 | 151 | 27 |
| 44-01 | ±30/60 | 8.1 | 14.5 | 24 | 224.8 | 92 | 28 | 12.8 | 10 | 219.8 | 35.8 |
| 44-01 | ±30/60 | 8.1 | 14.5 | 24 | 224.8 | 91 | 48 | 12.8 | 10 | 219.8 | 35.8 |
| 44-02 | ±30/60 | 8.1 | 14.5 | 24/40 | 239.8 | 94 | 40 | 9.7 | 8 | 248.8 | 35.8 |
| 44-02 | ±30/60 | 8.1 | 14.5 | 24/40 | 239.8 | 91 | 48 | 12.8 | 10 | 219.8248.8 | 35.8 |
| 44-02 | ±30/60 | 8.1 | 14.5 | 24/40 | 239.8 | 91 | 48 | 9.7 | 8 | 248.8 | 35.8 |
| 44-02 | ±30/60 | 8.1 | 14.5 | 24/40 | 239.8 | 96 | 57.3 | 9.7 | 8 | 248.8 | 35.8 |
| 44-02 | ±30/60 | 8.1 | 14.5 | 24/40 | 239.8 | 96 | 57.3 | 12.8 | 10 | 248.8270.8305.8 | 35.8 |
| 44-02 | ±30/60 | 8.1 | 14.5 | 24/40 | 239.8 | 105.2 | 75 | 12.8 | 10 | 257.8 | 35.8 |
| 44-02(b) | ±30/60 | 8.1 | 14.5 | 25 | 239.8 | 96 | 57.3 | 12.8 | 10 | 241.1 | 28.1 |
| 44-02(c) | ±30/60 | 8.1 | 14.5 | 40 | 219.8 | 105.9 | 75 | 12.8 | 10 | 292.9 | 40.9 |

外观图尺寸/Dimensions Table for Outline Drawing

| Fig.No | A | B | C | D | E | F | G | H | I | J | K |
|----------|--------|---------|------|---------|-------|-------|------|-----------|-------|-------------|------|
| 44-04 | ±30/60 | 8.1 | 14.5 | 24 | 244.8 | 91 | 48 | 9.7 | 8 | 248.8 | 35.8 |
| 44-05 | ±30/60 | 8.1 | 14.5 | 24 | 249.8 | 91 | 48 | 9.7 | 8 | 248.8 | 35.8 |
| 44-05 | ±30/60 | 8.1 | 14.5 | 40 | 249.8 | 105.2 | 75 | 12.8 | 10 | 267.8 | 35.8 |
| 44-06 | ±30/60 | 8.1 | 14.5 | 40 | 249.8 | 96 | 57.3 | 12.8 | 10 | 280.8 | 45.8 |
| 44-06 | ±30/60 | 8.1 | 14.5 | 40 | 249.8 | 105.2 | 75 | 12.8 | 10 | 267.8 | 45.8 |
| 44-07 | ±30/60 | 8.1 | 14.5 | 24/40 | 239.8 | 94 | 40 | 9.7 | 8 | 244.1 | 31.1 |
| 44-07 | ±30/60 | 8.1 | 14.5 | 24/40 | 239.8 | 91 | 48 | 9.7/12.8 | 8/10 | 244.1 215.1 | 31.1 |
| 44-07 | ±30/60 | 8.1 | 14.5 | 24/40 | 239.8 | 96 | 57.3 | 9.7/12.8 | 8/10 | 244.1 | 31.1 |
| 44-09 | ±30/60 | 8.1 | 14.5 | 24 | 229.8 | 96 | 57.3 | 9.7 | 8 | 254.1 | 41.1 |
| 44-10 | ±30/60 | 8.1 | 14.5 | 24 | 249.8 | 105.2 | 75 | 12.8 | 8 | 263.1 | 41.1 |
| 48-01 | ±30/60 | 8.1 | 14.5 | 40.6 | 221.9 | 105 | 57.3 | 9.7 | 10 | 241.1 | 28.1 |
| 48-02 | ±30/60 | 8.1 | 14.5 | 40.6 | 231.4 | 96 | 48 | 12.8 | 10 | 241.1 | 28.1 |
| 48-02 | ±30/60 | 8.1/9.7 | 14.5 | 40.6 | 231.4 | 105 | 57.3 | 12.8/15.9 | 10 | 263.1 | 28.1 |
| 48-02 | ±30/60 | 8.1/9.7 | 14.5 | 40.6 | 231.4 | 114 | 75 | 12.8 | 10 | 250.1 | 28.1 |
| 48-03 | ±30/60 | 8.1 | 14.5 | 40.6 | 266.5 | 105 | 57.3 | 12.8 | 10 | 251.1273.1 | 38.1 |
| 48-03 | ±30/60 | 8.1/9.7 | 14.5 | 40.6 | 266.5 | 105 | 57.3 | 15.9 | 12 | 273.1 | 38.1 |
| 48-03 | ±30/60 | 8.1/9.7 | 14.5 | 40.6 | 266.5 | 114 | 75 | 12.8 | 10 | 260.1 | 38.1 |
| 48-07 | ±30/60 | 9.7 | 14.5 | 40.6 | 260.5 | 114 | 75 | 12.8/15.9 | 12 | 284.9 | 32.9 |
| 48-08 | ±30/60 | 9.7 | 14.5 | 40.6 | 295.5 | 114 | 75 | 15.9 | 12 | 299.9332.9 | 47.9 |
| 50-03 | ±30/60 | 8.1/9.7 | 14.5 | 24/40.6 | 266.5 | 107 | 57 | 12.8 | 10 | 251.1273.1 | 38.1 |
| 50-03 | ±30/60 | 8.1/9.7 | 14.5 | 24/40.6 | 266.5 | 112 | 75 | 12.8/15.9 | 10/12 | 260.1290.1 | 38.1 |
| 50-04 | ±30/60 | 9.7 | 14.5 | 40 | 295.5 | 120.8 | 89 | 15.9 | 12 | 318.1 | 48.1 |
| 50-04(b) | 45 | 9.7 | 14.5 | 40 | 296.2 | 120.8 | 89 | 15.9 | 12 | 318.1 | 48.1 |
| 50-08 | ±30/60 | 9.7 | 14.5 | 24/40 | 295.5 | 112 | 75 | 12.8/15.9 | 10/12 | 299.9 | 47.9 |
| 50-08 | ±30/60 | 9.7 | 14.5 | 24/40.6 | 295.5 | 112 | 75 | 15.9 | 12 | 332.9 | 47.9 |
| 50-08 | ±30/60 | 9.7 | 14.5 | 24/40.6 | 295.5 | 120.8 | 89 | 15.9 | 12 | 317.9 | 47.9 |
| 55-01 | ±30/60 | 9.7 | 14.5 | 40.6 | 321.2 | 120 | 75 | 15.9 | 12 | 339.8 | 54.8 |
| 55-01 | ±30/60 | 9.7 | 14.5 | 40.6 | 321.2 | 129 | 89 | 15.9 | 12 | 365 | 54.8 |
| 55-02 | ±30/60 | 9.7 | 14.5 | 24 | 306.2 | 129 | 89 | 15.9 | 12 | 324.8 | 54.8 |
| 55-04 | ±30/60 | 9.7 | 14.5 | 24 | 321.2 | 129 | 89 | 15.9 | 12 | 324.8 | 54.8 |



马达简介 / Motor Introduction

瑞智制冷机器(东莞)有限公司是瑞智集团的子公司, 具有行业领先的马达开发设计技术和先进的生产设备。主要生产各种类型的马达及水泵, 产品广泛应用于除湿机、空调、冰箱、冰柜等产品的压缩机上。

Rechi Refrigeration (DongGuan) Co Ltd is the subsidiary company of Rechi Group, it has leading and state of art motors design and R&D technology and with advanced machinery for motors manufacturing. We manufacture various series and many types of motors for Water Pump, Dehumidifier, Air-conditioner, Home & commercial Refrigerator Compressor usage.

销售网络 / Sales Network



先进的检测设备 / Advanced Tester



生产车间
Production floor



马达动力测试机
CMT Motor Tester



定子测试机
Stator Tester



寿命测试机
Air stall Tester

马达 / Motor

主要产品 / Main Products

马达铁芯系列 / Motor Stator Cores Series

我司采用 "Zig-Zag" 连续冲切和自卸型堆叠技术生产定转子铁芯, 能有效管控硅钢片的冲切品质、降低物料损耗、提升产能。此技术可极大满足客户对品质与量的需求。

Rechi adopts and uses "Zig-Zag" Blanking with automatic continuous feeding punch presses and with auto stacking technology to produce Stator and Rotor core for Motors. As such, it enable us to provide and control good punching lamination quality, less scarp and waste. And best for production capacity as well. It can fulfill and satisfy customer QUALITY and QUANTITY requirement.

马达系列 / Motor Series



DC 变频马达系列 / DC Motor Series



马达系列参数 Motor Series Specifications

| 马达系列 Motor Series | 型号 MODEL | 内径 (") ID (") | 外径 (") OD (") | 功率 Hp |
|----------------------|---------------|------------------|------------------|---------|
| AC 系列 AC Series | 39 frame | 1.922 | 3.981 | 0.5-1.0 |
| | | 2.007 | 3.981 | 0.5-1.0 |
| | 44 frame | 2.208 | 4.418 | 1.0-1.5 |
| | 48 frame | 2.400 | 4.791 | 1.5-2.5 |
| | 50 frame | 2.400 | 4.921 | 1.5-2.5 |
| | 53 frame | 2.650 | 5.733 | 1.5-3.5 |
| | 53 frame | 2.650 | 6.480 | 2.0-3.5 |
| DC 系列 DC Series | 59 frame(1ph) | 2.650 | 6.480 | 2.0-3.5 |
| | 59 frame(3ph) | 2.650 | 6.480 | 2.0-3.5 |
| | 39 frame | 2.208 | 3.981 | 1.0-1.5 |
| | 44 frame | 2.400 | 4.416 | 1.5-2.0 |

水泵系列 / Water Pump Motor Series



水泵系列参数 Water Pump Motor Series Specifications

| 水泵系列 Water Pump Motor Series | 功率 Hp | 长 (") Length | 宽 (") Width | 高 (") Height |
|---------------------------------|----------|-----------------|----------------|-----------------|
| ES009X | 0.50 | 8.42 | 6.15 | 8.50 |
| ES011X | 0.75 | 9.21 | 6.15 | 8.50 |
| ES004X | 1.00 | 10.00 | 6.15 | 8.50 |
| ES006X | 1.00 | 9.60 | 6.15 | 8.50 |
| ES003X | 1.50 | 10.55 | 6.15 | 8.50 |
| ES007X | 1.50 | 10.55 | 6.15 | 8.50 |
| ES013X | 1.50 | 10.39 | 6.15 | 8.50 |

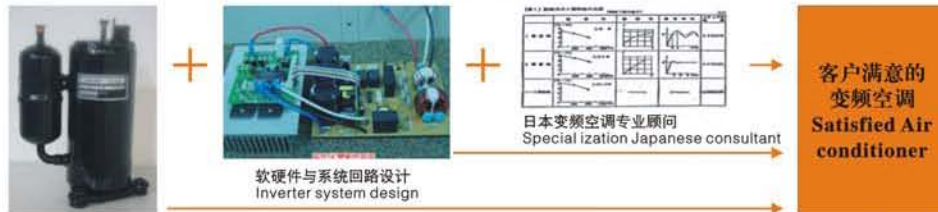


变频控制器/Inverter Controller

为了成为保护地球并减少全球暖化的一份子，瑞智精密除了积极于变频压缩机的研究创新开发外，并致力于专业DC变频控制器之研究开发，研发团队内专业人才于相关领域皆有10多年以上的资历，除此之外，多年来瑞智精密也与各相关单位进行密切的合作关系，积极开发出更好的产品，这全为了能让电机马达与电子控制器紧密的结合，进而提供给客户更具竞争力的产品。

In order to become a part of protectors who protects and reduces the global warming. Rechi is devoted to research and developing the compressors and Air-conditioner inverter. The members in the researching team of the inverter have more than 10 years of experience in this field. Besides, Rechi has cooperated with several inverter researching institutes. We make the inverter have the compact combination with the DC motors, and then offer the more competitive product to our customers.

瑞智DC变频产品的优势/Rechi's inverter product advantage



DC变频压缩机的选用
Recommend the compressor

瑞智为客户提供完整的DC变频空调所需的解决方案
RECHI supplies the total solution for DC inverter air-conditioner

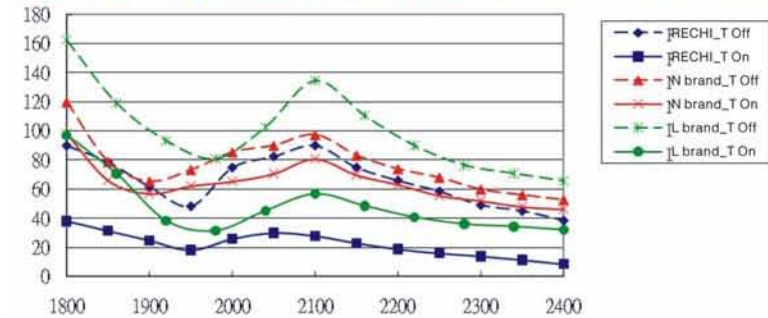
产品特色/Product characteristics:

| 项目 Items | 说明 Contents |
|--|--|
| 直流电机驱动功能 DC motor drive function | 低成本直流电机驱动。 Low cost DC motor driver. |
| 180° 正弦波驱动方案 180° sine waves drive function | 低压缩机震动。 Low compressor vibration. 低压缩机噪音。 Low compressor noise. 高压缩机效率。 High compressor efficiency. |
| 弱磁控制 Weak magnetic control | 增加压缩机稳定度。 Increase compressor stability. 降低控制器成本。 Reduce the cost of control device. |
| 力矩控制 Torque control | 抑制压缩机震动。 Restrain compressor vibration. |
| 软启动控制 Soft start-up control | 减低压缩机启动时震动及噪音。 Lower vibration and noise during compressor starting. 提高压缩机使用寿命。 Increase compressor life time. |
| 客制化设计 Customized design | 硬件方面：可依客户机体的设计，对控制器做出最合适尺寸以及最齐全的功能。 Hardware: Customized design for the suitable size and functions. 软件方面：可依消费者使用习惯，做出最佳化设计，可依客户所需功能，进行调整开发。 Software: Optimized design in accordance with consumer's operation habit. Design in accordance with customer's required functions. |
| 全方面服务 services | 专业空调系统人员及实验室，协助客户进行系统调整验证。 Air-conditioning system experts and laboratories to assist customer for system testing and adjustment. 专业EMI测试仪器，协助客户进行预先安规认证测试，减短取得相关证书的时间。 EMI test instrument to assist customer to obtain the relevant certificate. |



变频控制器/Inverter Controller

瑞智与他牌控制器之震动抑制能力比较表/Vibration control comparison chart with other brands



产品规格/Product specification:

| Voltage(single phase) | Frequency | Capacity |
|-----------------------|-----------|------------------|
| 187Vac~253Vac | 50/60Hz | 2.2KW / 7500BTU |
| 187Vac~253Vac | 50/60Hz | 2.8KW / 9000BTU |
| 187Vac~253Vac | 50/60Hz | 3.6KW / 12000BTU |
| 187Vac~253Vac | 50/60Hz | 4.1KW / 14000BTU |
| 187Vac~253Vac | 50/60Hz | 5.2KW / 18000BTU |
| 187Vac~253Vac | 50/60Hz | 6.3KW / 21000BTU |
| 187Vac~253Vac | 50/60Hz | 7.2KW / 24500BTU |

缩短客户DC变频空调设计时程

/Shorten customer's inverter air-conditioner design period

